

**CABRA DEVELOPMENTS LTD.  
MATUA RESIDENTIAL ESTATE  
179 MATUA ROAD, HUAPAI  
STAGE 3A AS BUILT PLANS  
(RELEASE STAGES 7, 8 & 9)**



**DRAWINGS - 17550AB STAGE 3A**



**LOCALITY PLAN**

**GENERAL (GE)**

- GE-001 COVER
- GE-002 ORIGINAL SITE AERIAL PHOTO
- GE-003 AS BUILT LOT LAYOUT PLAN

**EARTHWORKS (EW)**

- EW-101 EXISTING SITE PLAN
- EW-102 AS BUILT CONTOUR PLAN
- EW-103 AS BUILT DEPTH CONTOUR PLAN
- EW-104 AS BUILT UNDER FILL DRAINAGE PLAN
- EW-105 AS BUILT RETAINING WALL PLAN

**ROADING (RD)**

- RD-201 AS BUILT ROADING PLAN
- RD-202 AS BUILT TYPICAL ROAD CROSS SECTIONS

**STORMWATER (SW)**

- SW-301 AS BUILT STORMWATER MANHOLE DEATILS
- SW-302 AS BUILT STORMWATER PIPE PIPE AND CESSPIT DETAILS

**WASTEWATER (WW)**

- WW-401 AS BUILT PWC SEWER PLAN

**WATER SUPPLY (WS)**

- WS-501 AS BUILT WATERMAIN

**CONSENT NOTICE (CN)**

- CN-601 ASBUILT RETAINING WALL CONSENT NOTICE AREA
- CN-602 ASBUILT STORMWATER CONSENT NOTICE AREA
- CN-603 ASBUILT BATTER CONSENT NOTICE AREA

**17550AB GE-001  
AUGUST 2015**



I certify that these As-built plans are an accurate record of the works undertaken and that:

- The **Coordinates** (X, Y) are in terms of NZTM or NZGD(2000).
- The **Levels** (Z) are in terms of the Auckland 1946 (MSL) LINZ datum (DOSLI datum).

Signed: \_\_\_\_\_  
Chartered Professional Engineer

Date: 21 August 2015

Name: Ian T. Hutchinson

SUBDIVISION  
 STAGE  
 BOUNDARY



NOTE:  
 ALL LEVELS RELATE TO L & S DATUM.  
 ALL AREAS SUBJECT TO FINAL SURVEY

REV.	DATE	ITEM

The Design and Drawings shown on this sheet remain the Copyright of Ian Hutchinson Consultants Limited, and are not to be reproduced without their written Authority.

DO NOT SCALE IF IN DOUBT -- ASK



PO Box 150, Orewa 0946  
 154 Centreway Road, Orewa, Auckland  
 Ph: 09 426 5702 Fax: 09 426 9669 www.hc.co.nz

PROJECT  
**CABRA DEVELOPMENTS LTD  
 MATUA RESIDENTIAL ESTATE  
 179 MATUA ROAD, HUAPAI  
 STAGE 3A**

DRAWING TITLE  
**ORIGINAL SITE AERIAL PHOTO**

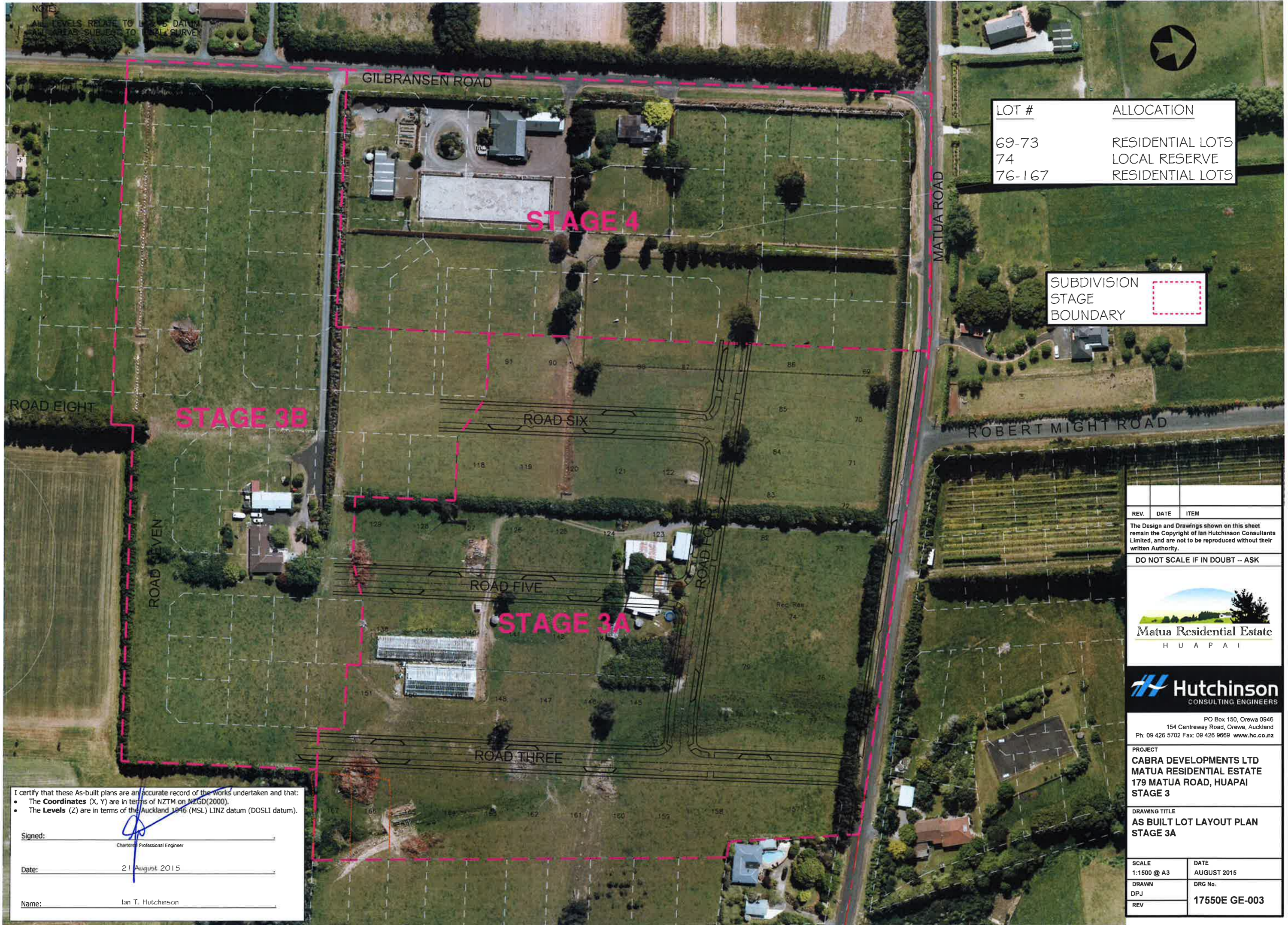
SCALE 1:1500 @ A3	DATE AUGUST 2015
DRAWN DPJ	DRG No. 17550E GE-002
REV	

NOTES  
 ALL LEVELS RELATE TO LINZ'S DATUM  
 ALL AREAS SUBJECT TO LOCAL CURVES



LOT #	ALLOCATION
69-73	RESIDENTIAL LOTS
74	LOCAL RESERVE
76-167	RESIDENTIAL LOTS

SUBDIVISION  
 STAGE  
 BOUNDARY



REV.	DATE	ITEM

The Design and Drawings shown on this sheet remain the Copyright of Ian Hutchinson Consultants Limited, and are not to be reproduced without their written Authority.

DO NOT SCALE IF IN DOUBT -- ASK



PO Box 150, Orewa 0946  
 154 Centreway Road, Orewa, Auckland  
 Ph: 09 426 5702 Fax: 09 426 9669 www.hc.co.nz

PROJECT  
**CABRA DEVELOPMENTS LTD  
 MATUA RESIDENTIAL ESTATE  
 179 MATUA ROAD, HUAPAI  
 STAGE 3**

DRAWING TITLE  
**AS BUILT LOT LAYOUT PLAN  
 STAGE 3A**

SCALE 1:1500 @ A3	DATE AUGUST 2015
DRAWN DPJ	DRG No. 17550E GE-003
REV	

I certify that these As-built plans are an accurate record of the works undertaken and that:

- The **Coordinates** (X, Y) are in terms of NZTM on NZGD(2000).
- The **Levels** (Z) are in terms of the Auckland 1946 (MSL) LINZ datum (DOSLI datum).

Signed: \_\_\_\_\_  
Chartered Professional Engineer

Date: 21 August 2015

Name: Ian T. Hutchinson

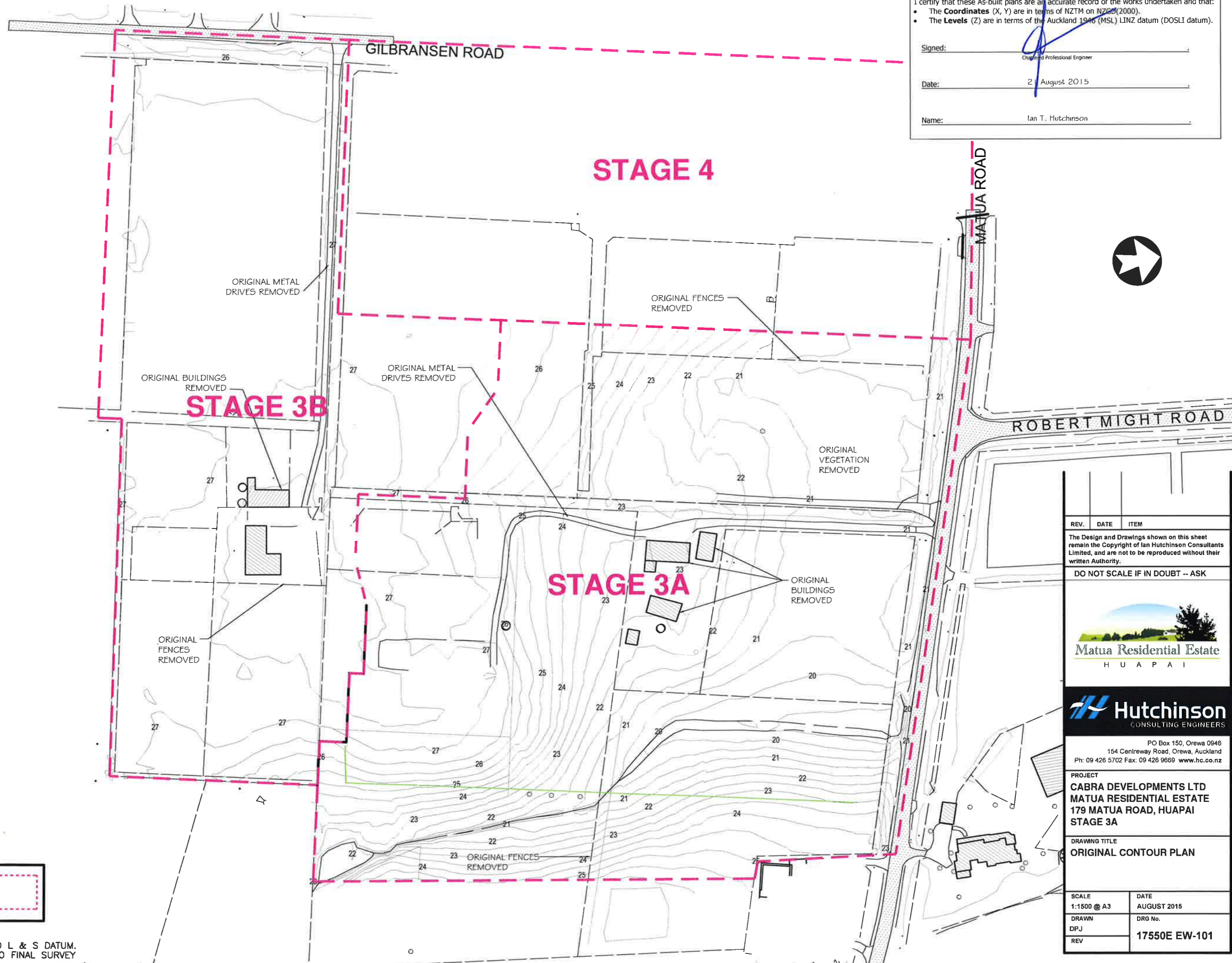
I certify that these As-built plans are an accurate record of the works undertaken and that:

- The **Coordinates** (X, Y) are in terms of NZTM on NZGD(2000).
- The **Levels** (Z) are in terms of the Auckland 1946 (MSL) LINZ datum (DOSLI datum).

Signed: \_\_\_\_\_  
Chartered Professional Engineer

Date: 2 August 2015

Name: Ian T. Hutchinson



SUBDIVISION  
 STAGE  
 BOUNDARY

NOTE:  
 ALL LEVELS RELATE TO L & S DATUM.  
 ALL AREAS SUBJECT TO FINAL SURVEY

REV.	DATE	ITEM
------	------	------

The Design and Drawings shown on this sheet remain the Copyright of Ian Hutchinson Consultants Limited, and are not to be reproduced without their written Authority.

DO NOT SCALE IF IN DOUBT -- ASK



PO Box 150, Orewa 0946  
 154 Centreway Road, Orewa, Auckland  
 Ph: 09 426 5702 Fax: 09 426 9669 www.hc.co.nz

PROJECT  
**CABRA DEVELOPMENTS LTD  
 MATUA RESIDENTIAL ESTATE  
 179 MATUA ROAD, HUAPAI  
 STAGE 3A**

DRAWING TITLE  
**ORIGINAL CONTOUR PLAN**

SCALE 1:1500 @ A3	DATE AUGUST 2015
DRAWN DPJ	DRG No. 17550E EW-101
REV	

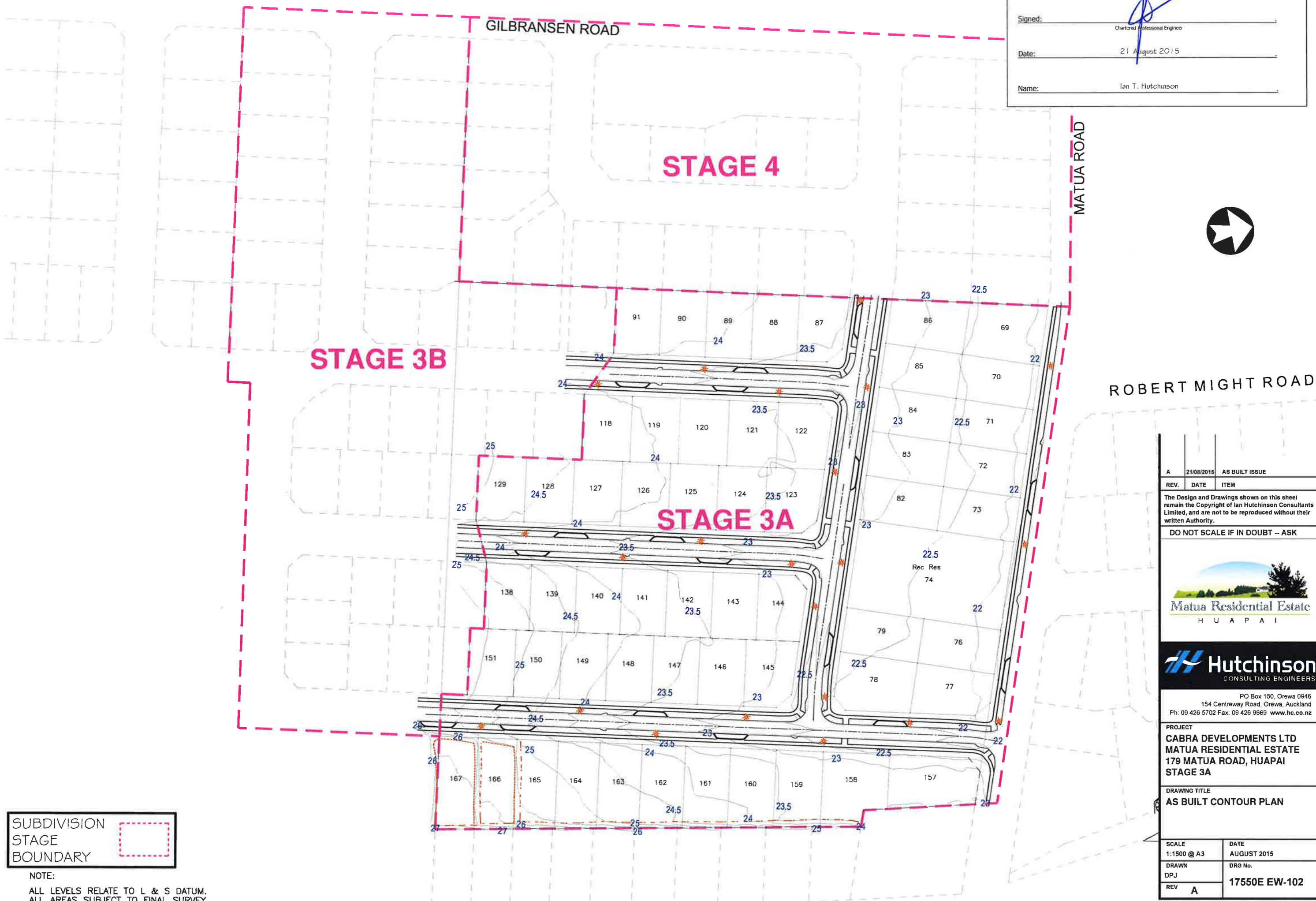
I certify that these As-built plans are an accurate record of the works undertaken and that:

- The **Coordinates** (X, Y) are in terms of NZTM on NZGD(2000).
- The **Levels** (Z) are in terms of the Auckland 1946 (MSL) LINZ datum (DOSLI datum).

Signed: \_\_\_\_\_  
Chartered Professional Engineer

Date: \_\_\_\_\_  
 21 August 2015

Name: \_\_\_\_\_  
 Ian T. Hutchinson



SUBDIVISION  
 STAGE  
 BOUNDARY

NOTE:  
 ALL LEVELS RELATE TO L & S DATUM.  
 ALL AREAS SUBJECT TO FINAL SURVEY

ROBERT MIGHT ROAD

A	21/08/2015	AS BUILT ISSUE
REV.	DATE	ITEM

The Design and Drawings shown on this sheet remain the Copyright of Ian Hutchinson Consultants Limited, and are not to be reproduced without their written Authority.

DO NOT SCALE IF IN DOUBT -- ASK

Matua Residential Estate  
 HUAPAI

**Hutchinson**  
 CONSULTING ENGINEERS

PO Box 150, Orewa 0946  
 154 Centreway Road, Orewa, Auckland  
 Ph: 09 426 5702 Fax: 09 426 9669 www.hc.co.nz

PROJECT  
**CABRA DEVELOPMENTS LTD  
 MATUA RESIDENTIAL ESTATE  
 179 MATUA ROAD, HUAPAI  
 STAGE 3A**

DRAWING TITLE  
**AS BUILT CONTOUR PLAN**

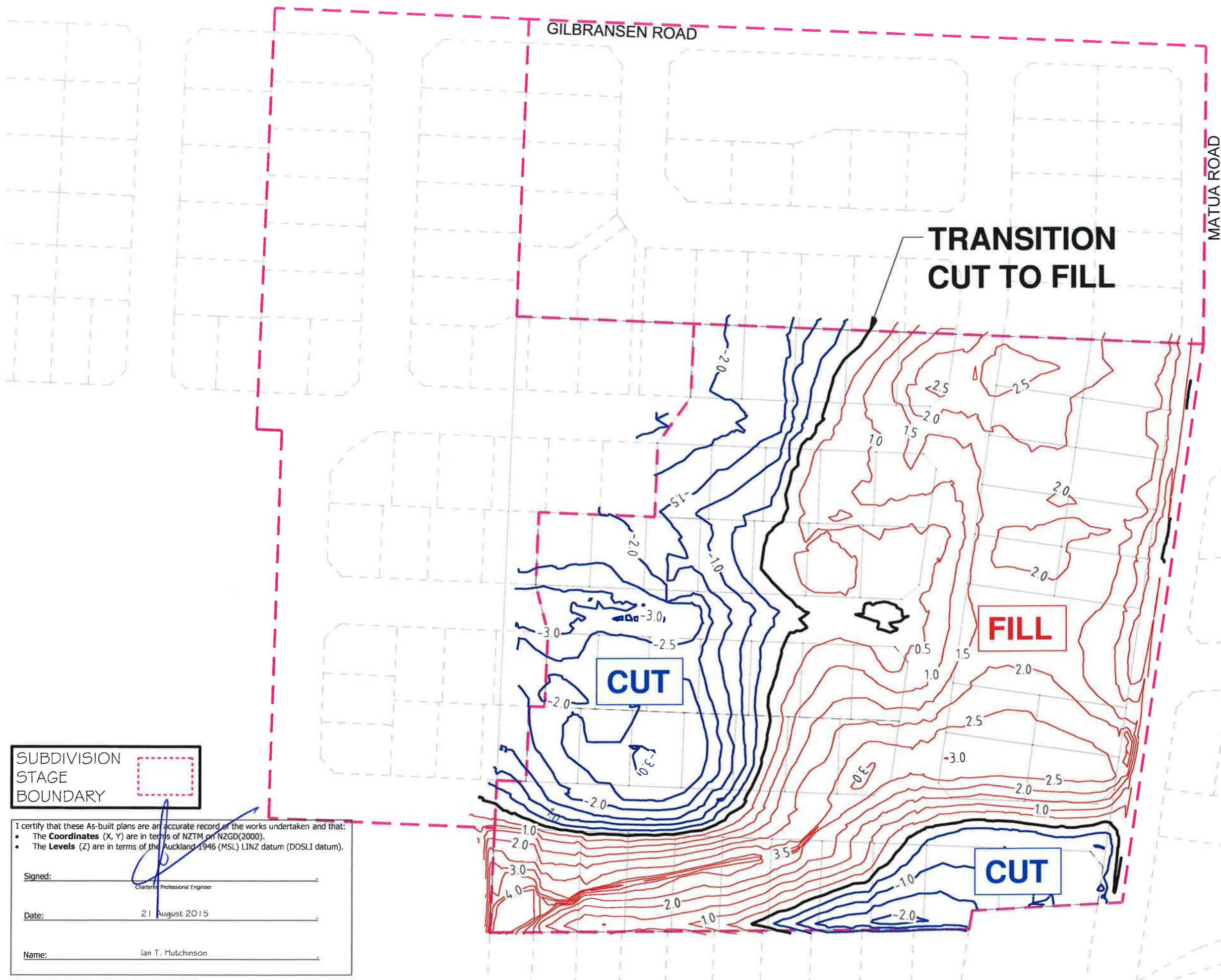
SCALE 1:1500 @ A3	DATE AUGUST 2015
DRAWN DPJ	DRG No. 17550E EW-102
REV A	

**EARTHWORKS LEGEND:**

**CUT** 36,400 m<sup>3</sup>

**FILL** 55,700 m<sup>3</sup>

EARTH WORKS AREA 9.37 Ha  
CONTOUR INTERVAL = 0.5m



SUBDIVISION  
STAGE  
BOUNDARY

I certify that these As-built plans are an accurate record of the works undertaken and that:

- The **Coordinates** (X, Y) are in terms of NZTM or NZGD(2000).
- The **Levels** (Z) are in terms of the Auckland 1946 (MSL) LINZ datum (DOSLI datum).

Signed: \_\_\_\_\_  
Chartered Professional Engineer

Date: 21 August 2015

Name: Ian T. Hutchinson

**NOTE:**  
ALL LEVELS RELATE TO L & S DATUM.  
ALL AREAS SUBJECT TO FINAL SURVEY

ROBERT MIGHT ROAD

REV.	DATE	ITEM
The Design and Drawings shown on this sheet remain the Copyright of Ian Hutchinson Consultants Limited, and are not to be reproduced without their written Authority.		
DO NOT SCALE IF IN DOUBT -- ASK		



**Hutchinson**  
CONSULTING ENGINEERS

PO Box 150, Orewa 0946  
154 Centreway Road, Orewa, Auckland  
Ph: 09 426 5702 Fax: 09 426 9669 www.hc.co.nz

PROJECT  
**CABRA DEVELOPMENTS LTD  
MATUA RESIDENTIAL ESTATE  
179 MATUA ROAD, HUAPAI  
STAGE 3A**

DRAWING TITLE  
**AS BUILT DEPTH CONTOUR  
PLAN**

SCALE 1:1500 @ A3	DATE AUGUST 2015
DRAWN DPJ	DRG No. <b>17550E EW-103</b>
REV	

SUBDIVISION  
STAGE  
BOUNDARY

I certify that these As-built plans are an accurate record of the works undertaken and that:

- The **Coordinates** (X, Y) are in terms of NZTM on NZGD(2000).
- The **Levels** (Z) are in terms of the Auckland 1946 (M8L) LINZ datum (DOSLI datum).

Signed: \_\_\_\_\_  
Chartered Professional Engineer

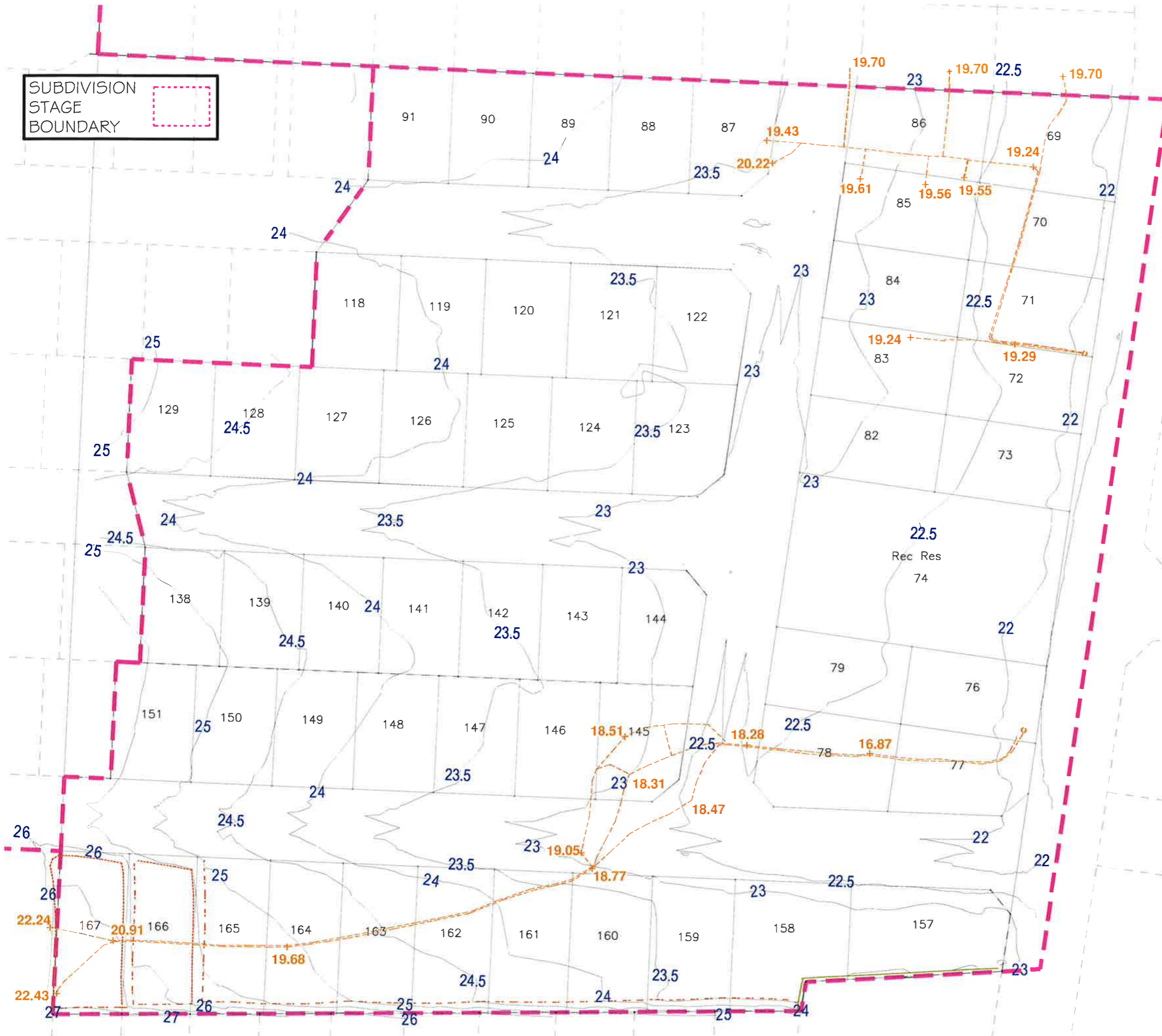
Date: 21 August 2015

Name: Ian T. Hutchinson

**LEGEND**

19.24  
- - - - - AS BUILT UNDERFILL DRAINS WITH REDUCED LEVEL AT INVERT OF DRAIN COIL

24  
- - - - - FINISHED CONTOUR LEVEL



REV.	DATE	ITEM
The Design and Drawings shown on this sheet remain the Copyright of Ian Hutchinson Consultants Limited, and are not to be reproduced without their written Authority.		
DO NOT SCALE IF IN DOUBT -- ASK		



**Hutchinson**  
CONSULTING ENGINEERS

PO Box 150, Orewa 0946  
154 Centreway Road, Orewa, Auckland  
Ph: 09 426 5702 Fax: 09 426 9689 www.hc.co.nz

PROJECT  
**CABRA DEVELOPMENTS LTD  
MATUA RESIDENTIAL ESTATE  
179 MATUA ROAD, HUAPAI  
STAGE 3A**

DRAWING TITLE  
**AS BUILT UNDER FILL  
DRAINAGE PLAN**

SCALE 1:1000 @ A3	DATE AUGUST 2015
DRAWN DPJ	DRG No. <b>17550E EW-104</b>
REV	

NOTE:  
ALL LEVELS RELATE TO L & S DATUM.  
ALL AREAS SUBJECT TO FINAL SURVEY

I certify that these As-built plans are an accurate record of the works undertaken and that:

- The **Coordinates** (X, Y) are in terms of NZTM on NZGD(2000).
- The **Levels** (Z) are in terms of the Auckland 1946 (MSL) LINZ datum (DOSLI datum).


Signed: \_\_\_\_\_  
Chartered Professional Engineer

Date: 21 August 2015

Name: Ian T. Hutchinson

SUBDIVISION  
 STAGE  
 BOUNDARY

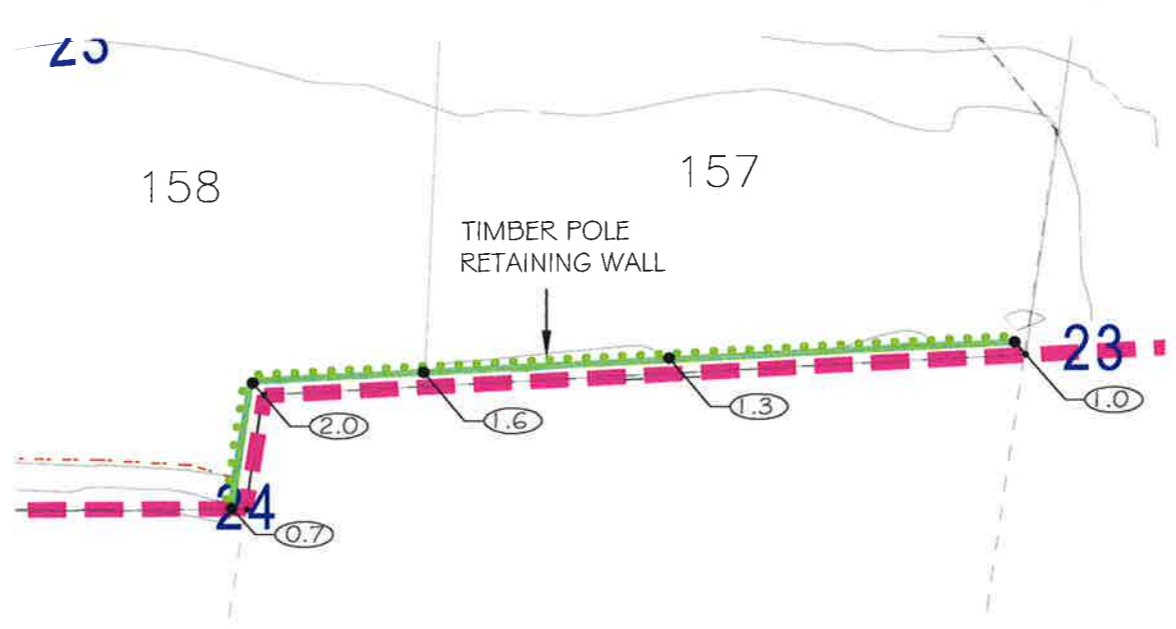
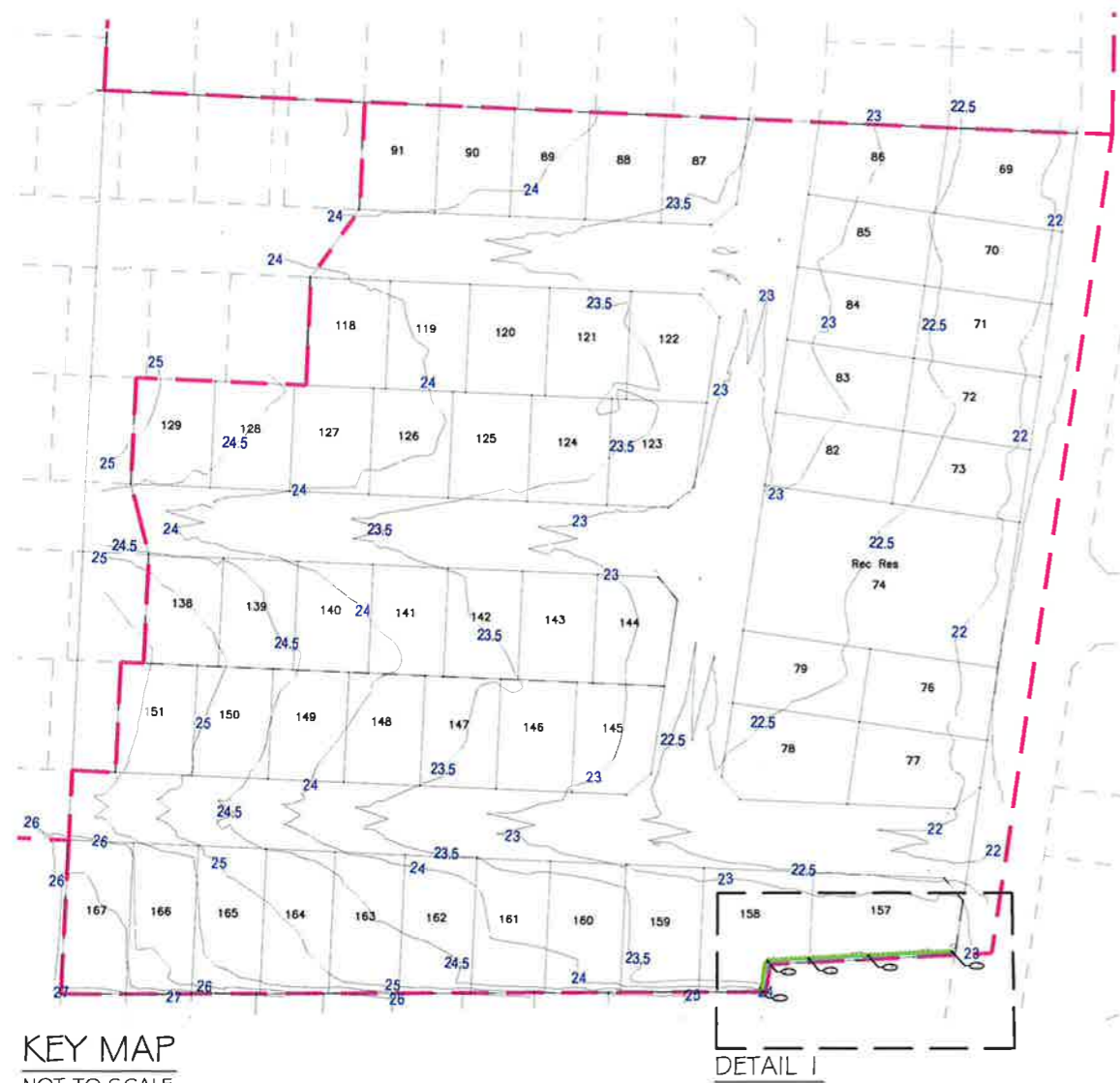
**LEGEND**

 ASBUILT RETAINING WALL LOCATION

TIMBER POLE RETAINING WALL 5 kPA SURCHARGE,  
 H5 POLES AT 1200mm CRS.

**NOTE**

RETAINING WALL POLES ARE NOT SHOWN TO SCALE. DO NOT SCALE POLE DIAMETER AND SPACING SHOWN.



DETAIL I  
 TIMBER POLE RETAINING WALL  
 SCALE 1:500

KEY MAP  
 NOT TO SCALE

NOTE:  
 ALL LEVELS RELATE TO L & S DATUM.  
 ALL AREAS SUBJECT TO FINAL SURVEY

REV.	DATE	ITEM
The Design and Drawings shown on this sheet remain the Copyright of Ian Hutchinson Consultants Limited, and are not to be reproduced without their written Authority.		
DO NOT SCALE IF IN DOUBT -- ASK		
 <b>Matua Residential Estate</b> HUAPAI		
 <b>Hutchinson</b> <small>CONSULTING ENGINEERS</small>		
PROJECT <b>CABRA DEVELOPMENTS LTD</b> <b>MATUA RESIDENTIAL ESTATE</b> <b>179 MATUA ROAD, HUAPAI</b> <b>STAGE 3A</b>		
DRAWING TITLE <b>AS BUILT RETAINING WALL PLAN</b>		
SCALE	DATE	
1:500 @ A3	AUGUST 2015	
DRAWN	DRG No.	
DPJ	17550E EW-105	
REV		



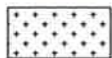






NOTE:  
ALL LEVELS RELATE TO L & S DATUM.  
ALL AREAS SUBJECT TO FINAL SURVEY

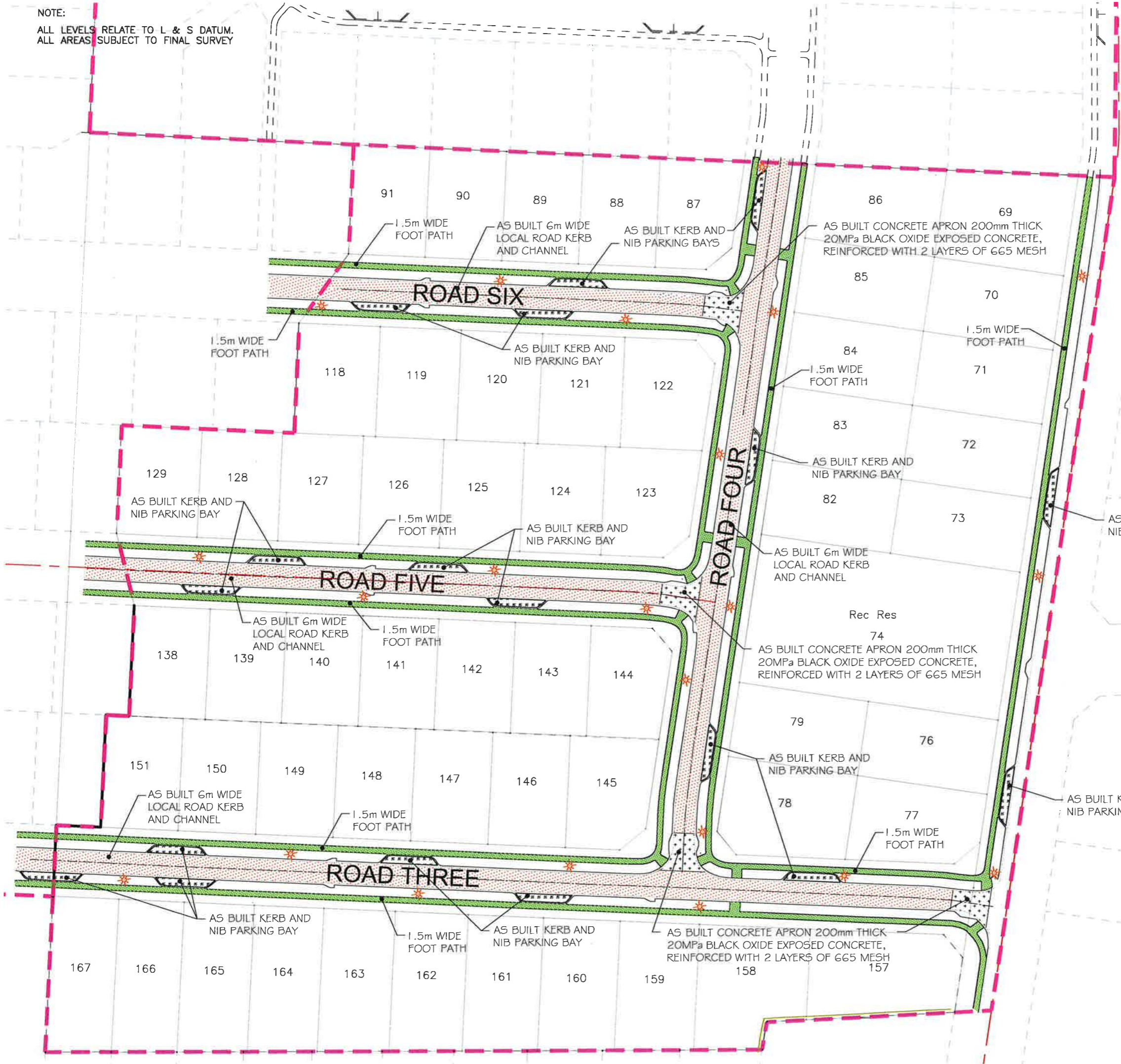
I certify that these As-built plans are an accurate record of the works undertaken and that:  
• The **Coordinates** (X, Y) are in terms of NZTM on NZGD(2000).  
• The **Levels** (Z) are in terms of the Auckland 1946 (MSL) LINZ datum (DOSLI datum).

Signed: \_\_\_\_\_  
Chartered Professional Engineer  
Date: 21 August 2015  
Name: Ian T. Hutchinson

**LEGEND**

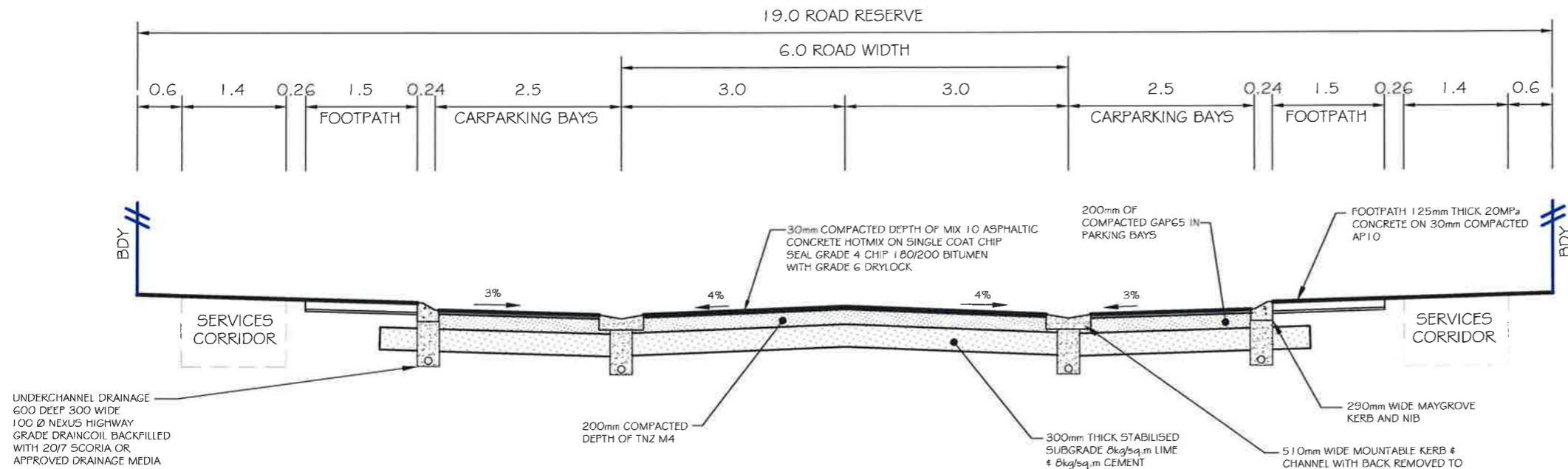
-  AS BUILT AC 14.30mm THICK HOTMIX PAVEMENT
-  AS BUILT CONCRETE FOOTPATH 125mm THICK 20MPa
-  AS BUILT 200mm THICK 20MPa BLACKOXIDE EXPOSED CONCRETE, REINFORCED WITH 2 LAYERS OF G65 MESH
-  AS BUILT PARKING BAY
-  ASBUILT STREET LIGHT

 **SUBDIVISION STAGE BOUNDARY** 



REV.	DATE	ITEM
The Design and Drawings shown on this sheet remain the Copyright of Ian Hutchinson Consultants Limited, and are not to be reproduced without their written Authority.		
DO NOT SCALE IF IN DOUBT -- ASK		
 <b>Matua Residential Estate</b> HUAPAI		
 <b>Hutchinson</b> CONSULTING ENGINEERS		
PO Box 150, Orewa 0946 154 Centreway Road, Orewa, Auckland Ph: 09 426 5702 Fax: 09 426 9669 www.hc.co.nz		
PROJECT		
CABRA DEVELOPMENTS LTD MATUA RESIDENTIAL ESTATE 179 MATUA ROAD, HUAPAI STAGE 3A		
DRAWING TITLE		
AS BUILT ROADING PLAN		
SCALE	DATE	
1:1500 @ A3	AUGUST 2015	
DRAWN	DRG No.	
DPJ	17550E RD-201	
REV		

ROAD NAME	ROAD TYPE	CYCLEWAY LOCATION
MATUA ROAD	6.5m WIDE COLLECTOR/ NEIGHBOURHOOD ROAD IN 20m WIDE RESERVE	NORTHERN (BY OTHERS)
GILBRANSEN ROAD	6.5m WIDE COLLECTOR/ NEIGHBOURHOOD ROAD IN 20m WIDE RESERVE	WESTERN (BY OTHERS)
ROADS THREE, FOUR, FIVE & SIX	6.0m WIDE LOCAL/GREENWAY ROAD IN 19m WIDE RESERVE	N/A
ROAD SEVEN	6.5m WIDE COLLECTOR/ NEIGHBOURHOOD ROAD IN 20m WIDE RESERVE	SOUTHERN
ROAD EIGHT	6.0m WIDE LOCAL/GREENWAY ROAD IN 15m WIDE RESERVE	N/A



**TYPICAL AS BUILT 6.0m WIDE ROAD WITH 19.0m ROAD RESERVE - LOCAL / GREENWAY ROAD WITH PARKING**

SCALE 1:75 @ A3

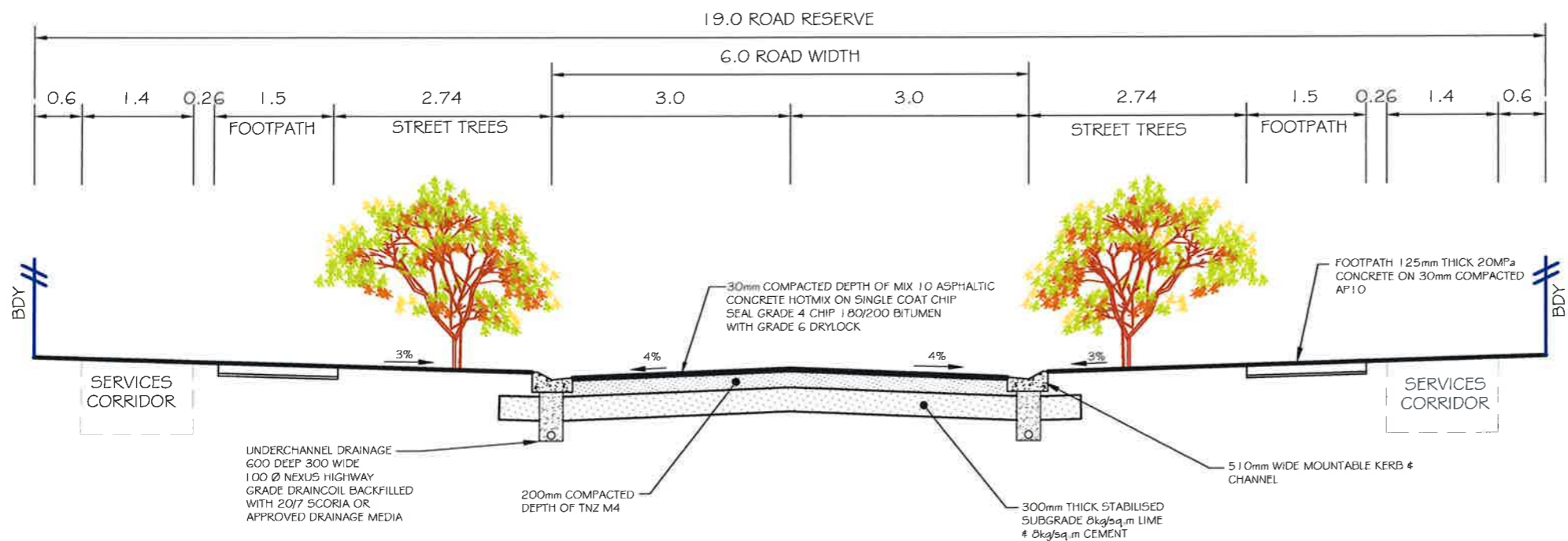
I certify that these As-built plans are an accurate record of the works undertaken and that:

- The **Coordinates** (X, Y) are in terms of NZTM on NZGD(2000).
- The **Levels** (Z) are in terms of the Auckland 1946 (MSL) LINZ datum (DOSLI datum).

Signed: \_\_\_\_\_  
 Chartered Professional Engineer

Date: 21 August 2015

Name: Ian T. Hutchinson



**TYPICAL AS BUILT 6.0m WIDE ROAD WITH 19.0m ROAD RESERVE - LOCAL / GREENWAY ROAD WITHOUT PARKING**

SCALE 1:75 @ A3

REV.	DATE	ITEM

The Design and Drawings shown on this sheet remain the Copyright of Ian Hutchinson Consultants Limited, and are not to be reproduced without their written Authority.

**DO NOT SCALE IF IN DOUBT - ASK**

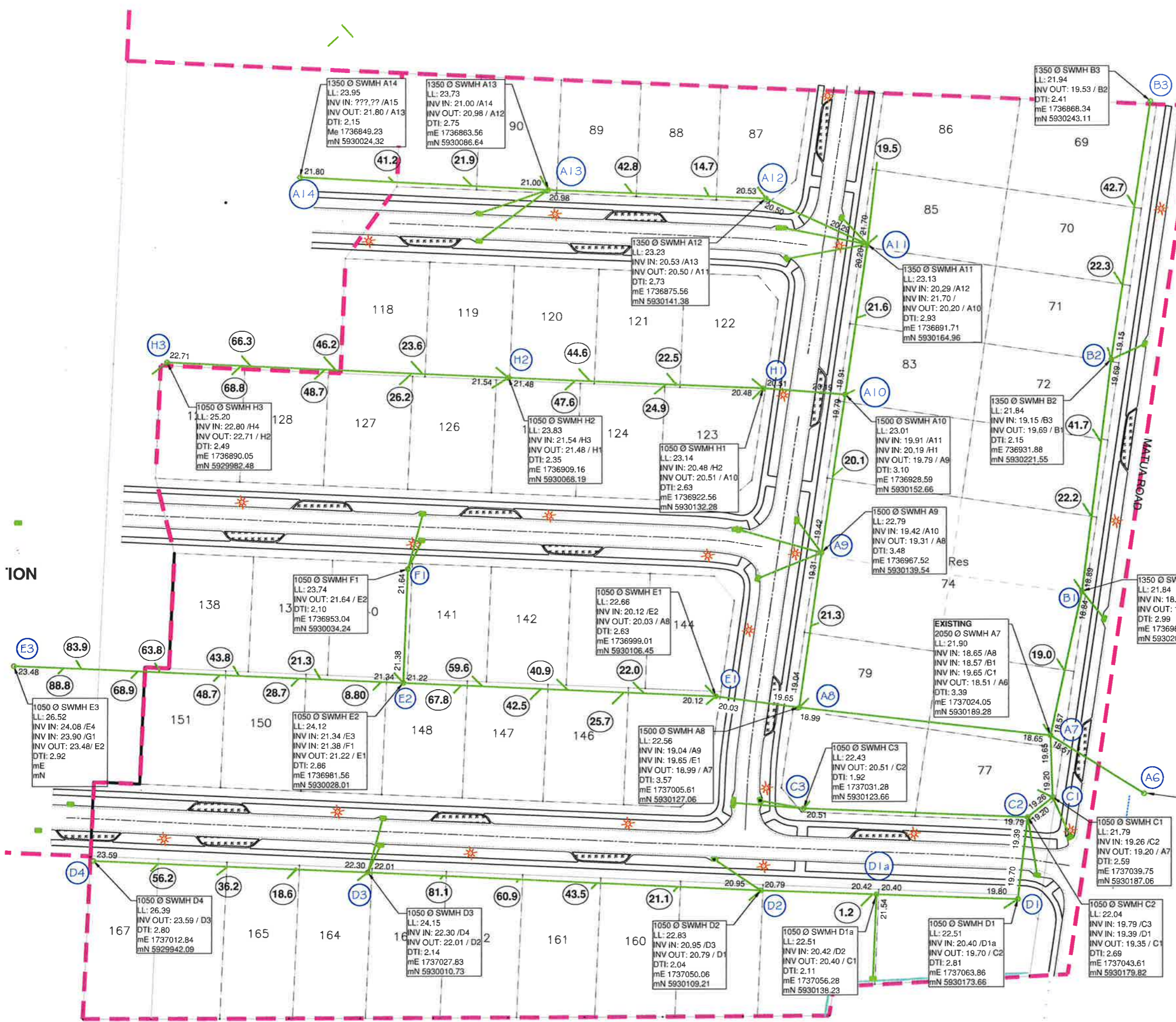
**Hutchinson**  
CONSULTING ENGINEERS

PO Box 150, Orewa 0946  
 154 Centreway Road, Orewa, Auckland  
 Ph: 09 426 5702 Fax: 09 426 9669 www.hc.co.nz

PROJECT  
**CABRA DEVELOPMENTS LTD  
 MATUA RESIDENTIAL ESTATE  
 179 MATUA ROAD, HUAPAI  
 STAGE 3A**

DRAWING TITLE  
**AS BUILT TYPICAL  
 ROAD CROSS  
 SECTIONS**

SCALE AS SHOWN @ A3	DATE AUGUST 2015
DRAWN DPJ	DRG No. 17550E RD-202
REV	



**LEGEND**

- ASBUILT STORMWATER LINE
- ASBUILT STORMWATER MANHOLE
- ASBUILT CESSPIT
- 13.8 DISTANCE FROM DOWNSTREAM MH TO LOT CONNECTION

**NOTE**

ALL CONNECTIONS EXCEPT WHERE NOTED ARE 100mm Ø PVC S/NIG BACKFILLED WITH COMPACTED CLAY.

ALL CESSPIT LEADS EXCEPT WHERE NOTED ARE 225mm DIA. RCRRJ.

ALL PIPES ARE CLASS 2 RCRRJ UNLESS OTHERWISE NOTED. ALL PIPES HAVE H2 BEDDING WITH COMPACTED CLAY BACKFILL EXCEPT THOSE CROSSING ROADS OR ROW'S WHICH ARE BACKFILLED WITH COMPACTED HARDFILL.

I certify that these As-built plans are an accurate record of the works undertaken and that:

- The **Coordinates** (X, Y) are in terms of NZTM on NZGD(2000).
- The **Levels** (Z) are in terms of the Auckland 1946 (MSL) LINZ datum (DOSLI datum).

Signed: \_\_\_\_\_  
 Date: 2 August 2015  
 Name: Ian T. Hutchinson

ION

REV.	DATE	ITEM
The Design and Drawings shown on this sheet remain the Copyright of Ian Hutchinson Consultants Limited, and are not to be reproduced without their written Authority.		
DO NOT SCALE IF IN DOUBT -- ASK		



**Hutchinson**  
CONSULTING ENGINEERS

PO Box 150, Orewa 0946  
 154 Centreway Road, Orewa, Auckland  
 Ph: 09 426 5702 Fax: 09 426 9669 www.hc.co.nz

PROJECT  
**CABRA DEVELOPMENTS LTD  
 MATUA RESIDENTIAL ESTATE  
 STAGE 3A  
 179 MATUA ROAD, HUAPAI**

DRAWING TITLE  
**AS BUILT STORMWATER  
 MANHOLE DETAILS**

SCALE 1:1000 @ A3	DATE AUGUST 2015
DRAWN DPJ	DRG No. 17550E SW-301
REV	

NOTE:  
 ALL LEVELS RELATE TO L & S DATUM.  
 ALL AREAS SUBJECT TO FINAL SURVEY

I certify that these As-built plans are an accurate record of the works undertaken and that:

- The **Coordinates** (X, Y) are in terms of NZTM on NZGD2000).
- The **Levels** (Z) are in terms of the Auckland 1946 (M.S.L.) LINZ datum (DOSLI datum).

Signed: \_\_\_\_\_  
Chartered Professional Engineer

Date: 21 August 2015

Name: Ian T. Hutchinson

**LEGEND**

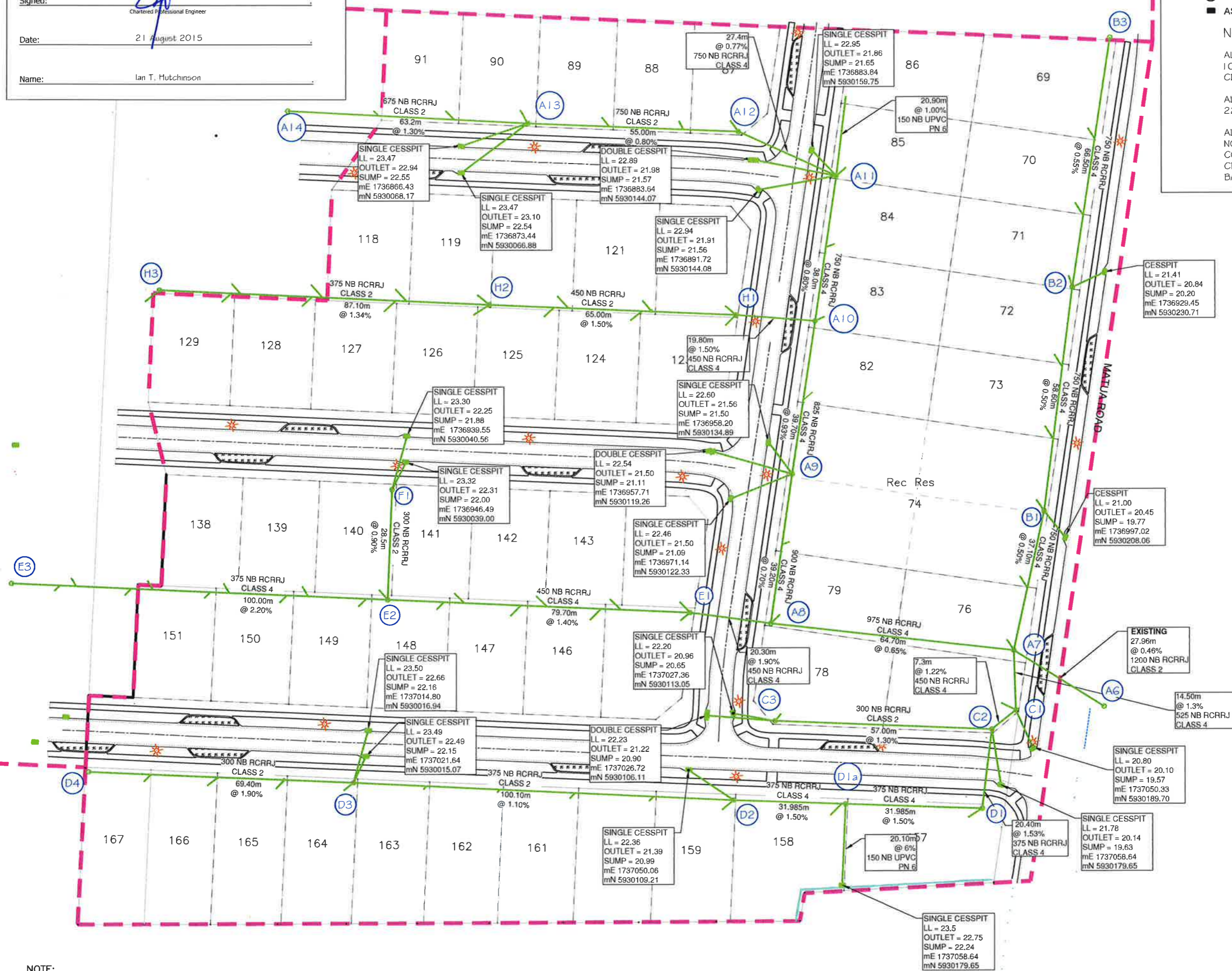
- ASBUILT STORMWATER LINE
- ASBUILT STORMWATER MANHOLE
- ASBUILT CESSPIT

**NOTE**

ALL CONNECTIONS EXCEPT WHERE NOTED ARE 100mmØ uPVC 5N1G BACKFILLED WITH COMPACTED CLAY.

ALL CESSPIT LEADS EXCEPT WHERE NOTED ARE 225mm DIA. RCRRJ.

ALL PIPES ARE CLASS 2 RCRRJ UNLESS OTHERWISE NOTED. ALL PIPES HAVE H2 BEDDING WITH COMPACTED CLAY BACKFILL EXCEPT THOSE CROSSING ROADS OR ROWS WHICH ARE BACKFILLED WITH COMPACTED HARDFILL.



**NOTE:**  
ALL LEVELS RELATE TO L & S DATUM.  
ALL AREAS SUBJECT TO FINAL SURVEY

A	21/08/2015	AS BUILT ISSUE
REV.	DATE	ITEM

The Design and Drawings shown on this sheet remain the Copyright of Ian Hutchinson Consultants Limited, and are not to be reproduced without their written Authority.

**DO NOT SCALE IF IN DOUBT -- ASK**

**Hutchinson**  
CONSULTING ENGINEERS

PO Box 150, Orewa 0946  
154 Centreway Road, Orewa, Auckland  
Ph: 09 426 5702 Fax: 09 426 9669 www.hc.co.nz

**PROJECT**  
CABRA DEVELOPMENTS LTD  
MATUA RESIDENTIAL ESTATE  
STAGE 3A  
179 MATUA ROAD, HUAPAI

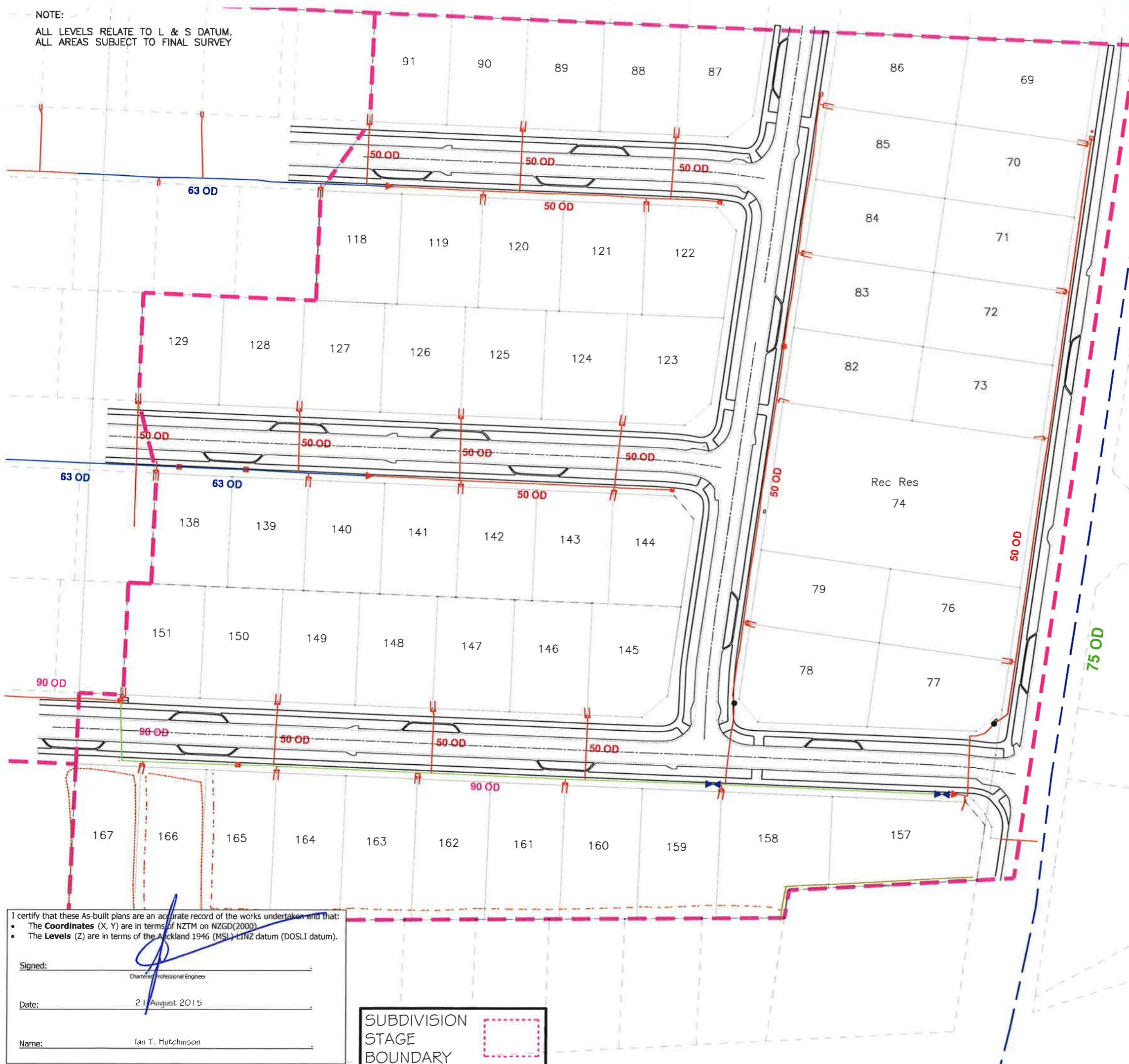
**DRAWING TITLE**  
AS BUILT STORMWATER  
PIPE AND CESSPIT DETAILS

SCALE	DATE
1:1000 @ A3	AUGUST 2015
DRAWN	DRG No.
DPJ	17550E SW-302
REV	A

NOTE:  
 ALL LEVELS RELATE TO L & S DATUM.  
 ALL AREAS SUBJECT TO FINAL SURVEY

**LEGEND**

- ASBUILT 50mm OD (PE80PN80B) WASTEWATER LINE
- ASBUILT 63mm OD (PE80PN80B) WASTEWATER LINE
- AS BUILT 90mm OD (PE80PN80B) WASTEWATER LINE
- - - EXISTING WASTEWATER LINE
- ◀ ASBUILT REDUCER
- ▶ ASBUILT PEET VALVE
- ASBUILT FLUSHING POINT
- - - ASBUILT BOUNDARY KIT



I certify that these As-built plans are an accurate record of the works undertaken and that:

- The **Coordinates** (X, Y) are in terms of NZTM on NZGD(2000)
- The **Levels** (Z) are in terms of the Auckland 1946 (MSL) LINZ datum (DOSLI datum).

Signed: \_\_\_\_\_  
Chartered Professional Engineer

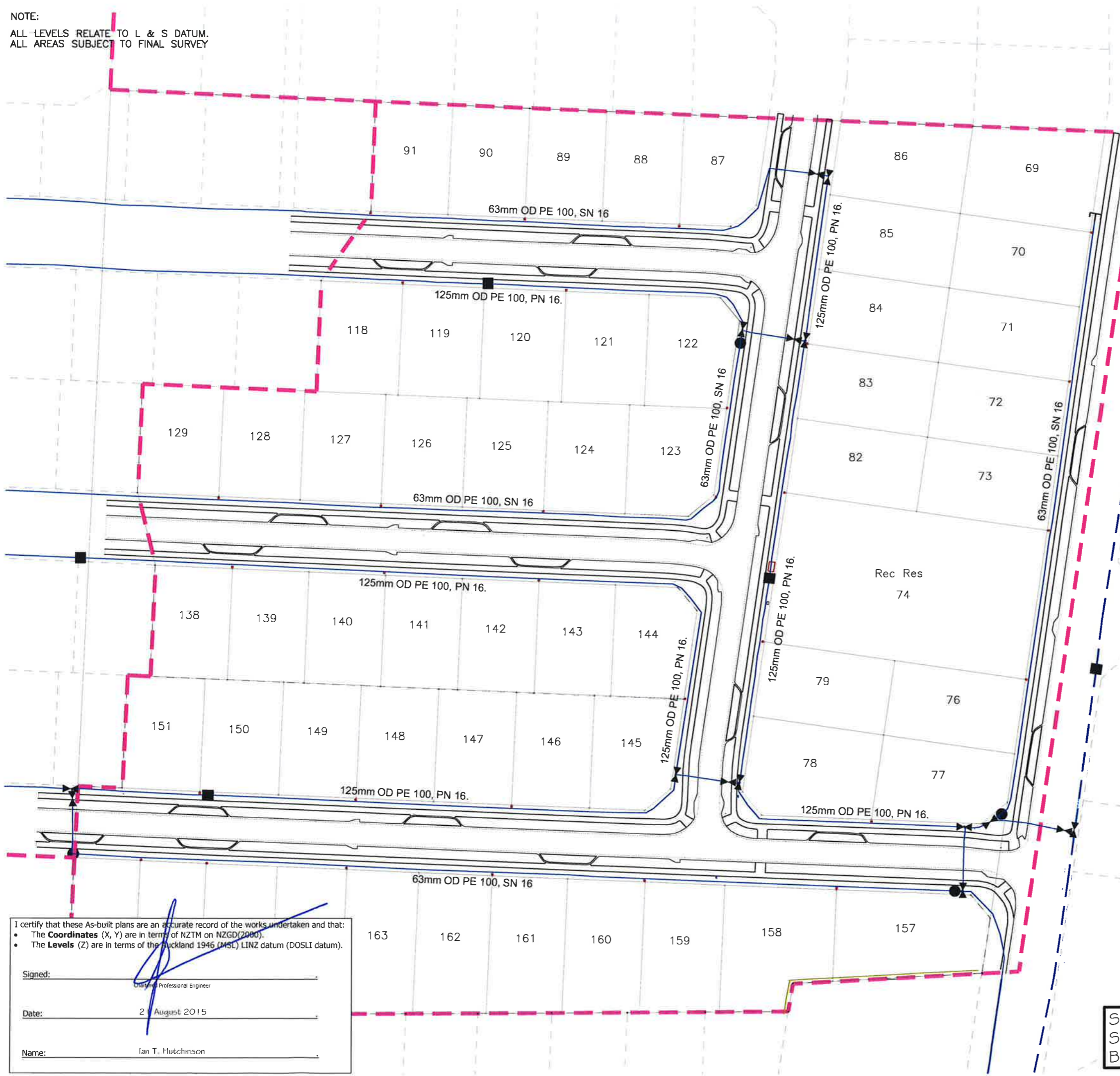
Date: 21 August 2015

Name: Ian T. Hutchinson

SUBDIVISION  
 STAGE  
 BOUNDARY

REV.	DATE	ITEM
<p>The Design and Drawings shown on this sheet remain the Copyright of Ian Hutchinson Consultants Limited, and are not to be reproduced without their written Authority.</p> <p style="text-align: center;">DO NOT SCALE IF IN DOUBT -- ASK</p>		
<small>PO Box 150, Orewa 0946          154 Centreway Road, Orewa, Auckland          Ph: 09 426 5702 Fax: 09 426 9669 www.hc.co.nz</small>		
<p>PROJECT  <b>CABRA DEVELOPMENTS LTD          MATUA RESIDENTIAL ESTATE          179 MATUA ROAD, HUAPAI          STAGE 3A</b></p>		
<p>DRAWING TITLE  <b>AS BUILT WASTE WATER PLAN</b></p>		
SCALE 1:1500 @ A3	DATE AUGUST 2015	
DRAWN DPJ	DRG No. 17550E WW-401	
REV		

NOTE:  
ALL LEVELS RELATE TO L & S DATUM.  
ALL AREAS SUBJECT TO FINAL SURVEY



**LEGEND**

- ASBUILT WATER
- ASBUILT SLUICE VALVE
- ASBUILT PEET VALVE
- ASBUILT HYDRANT
- ASBUILT BLANK CAP
- EXISTING WATER
- EXISTING HYDRANT

**NOTE**

MINIMUM COVER TO ASBUILT WATER-MAIN IS 900mm UNDER THE CARRIAGEWAY WITH NUMBER 3 SAND BEDDING AND BACKFILLED WITH COMPACTED GAP 65 BASECOURSE.

MINIMUM COVER TO ASBUILT WATER-MAIN IS 600mm UNDER ALL GRASSED AREAS WITH NUMBER 3 SAND BEDDING AND BACKFILLED WITH COMPACTED ORIGINAL CLAY.

I certify that these As-built plans are an accurate record of the works undertaken and that:

- The **Coordinates** (X, Y) are in terms of NZTM on NZGD(2000).
- The **Levels** (Z) are in terms of the Auckland 1946 (MSL) LINZ datum (DOSLI datum).

Signed: \_\_\_\_\_  
Date: 2 August 2015  
Name: Ian T. Hutchinson

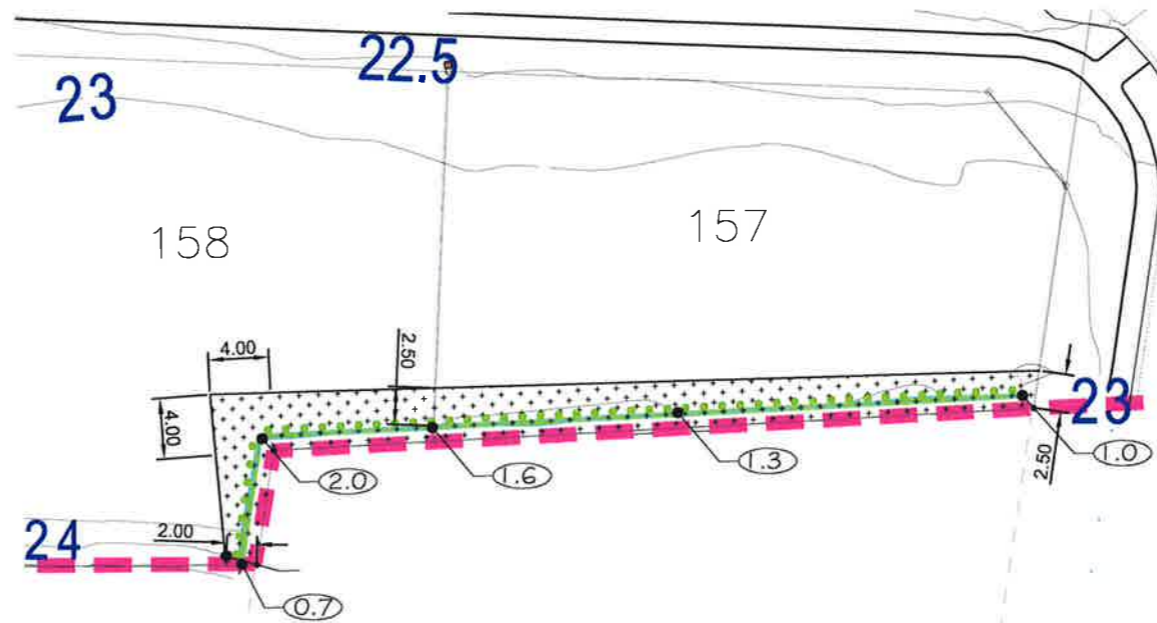
REV.	DATE	ITEM
The Design and Drawings shown on this sheet remain the Copyright of Ian Hutchinson Consultants Limited, and are not to be reproduced without their written Authority.		
DO NOT SCALE IF IN DOUBT -- ASK		
 <b>Matua Residential Estate</b> HUAPAI		
 <b>Hutchinson</b> CONSULTING ENGINEERS		
PO Box 150, Orewa 0946 154 Centreway Road, Orewa, Auckland Ph: 09 426 5702 Fax: 09 426 9669 www.hc.co.nz		
<b>PROJECT</b> <b>CABRA DEVELOPMENTS LTD</b> <b>MATUA RESIDENTIAL ESTATE</b> <b>179 MATUA ROAD, HUAPAI</b> <b>STAGE 3A</b>		
<b>DRAWING TITLE</b> <b>AS BUILT WATERMAIN</b>		
SCALE	DATE	
1:1500 @ A3	AUGUST 2015	
DRAWN	DRG No.	
DPJ		
REV		<b>17550E WS-501</b>

SUBDIVISION  
STAGE  
BOUNDARY

NOTE:  
 ALL LEVELS RELATE TO L & S DATUM.  
 ALL AREAS SUBJECT TO FINAL SURVEY



KEY MAP  
 NOT TO SCALE



DETAIL I  
 TIMBER POLE RETAINING WALL  
 SCALE 1:500

**LEGEND**

CONSENT NOTICE AREA

RETAINING WALL HEIGHT

**NOTE**

THE CONSENT NOTICE AREA INDICATES THE LOCATION AND EXTENT OF ZONES OF INFLUENCE OF TIMBER POLE AND CONCRETE BLOCK RETAINING WALLS. BUILDING OR EARTHWORKS WITHIN THIS ZONE WILL REQUIRE SPECIFIC ENGINEERING DESIGN.

RETAINING WALL POLES ARE NOT SHOWN TO SCALE. DO NOT SCALE POLE DIAMETER AND SPACING SHOWN.

I certify that these As-built plans are an accurate record of the works undertaken and that:

- The **Coordinates** (X, Y) are in terms of NZTM or NZGD(2000).
- The **Levels** (Z) are in terms of the Auckland 1946 (MSL) LINZ datum (DOSLI datum).

Signed: \_\_\_\_\_  
 Chartered Professional Engineer

Date: 21 August 2015

Name: Ian T. Hutchinson

REV.	DATE	ITEM
The Design and Drawings shown on this sheet remain the Copyright of Ian Hutchinson Consultants Limited, and are not to be reproduced without their written Authority.		
DO NOT SCALE IF IN DOUBT -- ASK		



**Hutchinson**  
 CONSULTING ENGINEERS

PO Box 150, Orewa 0946  
 154 Centreway Road, Orewa, Auckland  
 Ph: 09 426 5702 Fax: 09 426 9669 www.hc.co.nz

PROJECT  
**CABRA DEVELOPMENTS LTD  
 MATUA RESIDENTIAL ESTATE  
 179 MATUA ROAD, HUAPAI  
 STAGE 3A**

DRAWING TITLE  
**ASBUILT  
 RETAINING WALL  
 CONSENT NOTICE AREA**

SCALE 1:1500 @ A3	DATE AUGUST 2015
DRAWN DPJ	DRG No. <b>17550E CN-601</b>
REV	

SUBDIVISION  
 STAGE  
 BOUNDARY

NOTE:  
 ALL LEVELS RELATE TO L & S DATUM.  
 ALL AREAS SUBJECT TO FINAL SURVEY



AS BUILT CONSENT NOTICE SET  
 BACKS ARE MEASURED FROM  
 BOUNDARY PEGS

ROBERT MIGHT ROAD

**LEGEND**

CONSENT NOTICE AREA

ASBUILT STORMWATER LINE

ASBUILT STORMWATER MANHOLE

**NOTE**

THE CONSENT NOTICE AREA INDICATES THE LOCATION AND EXTENT OF ZONES OF INFLUENCE OF SW SERVICES OUTSIDE OF YARD AREAS. ANY BUILDING WITHIN YARDS MAY REQUIRE CONFIRMATION THAT SERVICES WILL NOT BE AFFECTED. BUILDING WITHIN THIS ZONE WILL REQUIRE SPECIFIC ENGINEERING DESIGN.



I certify that these As-built plans are an accurate record of the works undertaken and that:

- The **Coordinates** (X, Y) are in terms of NZTM on NZGD(2000).
- The **Levels** (Z) are in terms of the Auckland 1946 (MSL) LINZ datum (DOSLI datum).

Signed:   
 Chartered Professional Engineer

Date: 21 August 2015

Name: Ian T. Hutchinson

REV.	DATE	ITEM
The Design and Drawings shown on this sheet remain the Copyright of Ian Hutchinson Consultants Limited, and are not to be reproduced without their written Authority.		
DO NOT SCALE IF IN DOUBT -- ASK		



PO Box 150, Orewa 0946  
 154 Centreway Road, Orewa, Auckland  
 Ph: 09 426 5702 Fax: 09 426 9699 www.hc.co.nz

PROJECT  
**CABRA DEVELOPMENTS LTD  
 MATUA RESIDENTIAL ESTATE  
 179 MATUA ROAD, HUAPAI  
 STAGE 3A**

DRAWING TITLE  
**ASBUILT  
 STORM WATER CONSENT  
 NOTICE AREA**

SCALE 1:1500 @ A3	DATE AUGUST 2015
DRAWN DPJ	DRG No. 17550E CN-602
REV	

SUBDIVISION  
 STAGE  
 BOUNDARY



NOTE:  
 ALL LEVELS RELATE TO L & S DATUM.  
 ALL AREAS SUBJECT TO FINAL SURVEY



LEGEND	
	CONSENT NOTICE AREA
	LEADING EDGE PILE ZONE
	TOP OF BATTER
	TOE OF BATTER

AS BUILT CONSENT NOTICE  
 DIMENSIONS ARE MEASURED  
 FROM BOUNDARIES

## ROBERT MIGHT ROAD

I certify that these As-built plans are an accurate record of the works undertaken and that:

- The **Coordinates** (X, Y) are in terms of NZTM on NZGD(2000).
- The **Levels** (Z) are in terms of the Auckland 1946 (MSL) LINZ datum (DOSLI datum).

Signed: \_\_\_\_\_  
Chartered Professional Engineer

Date: 21 August 2015

Name: Ian T. Hutchinson

REV.	DATE	ITEM
The Design and Drawings shown on this sheet remain the Copyright of Ian Hutchinson Consultants Limited, and are not to be reproduced without their written Authority.		
DO NOT SCALE IF IN DOUBT -- ASK		



PO Box 150, Orewa 0946  
 154 Centreway Road, Orewa, Auckland  
 Ph: 09 426 5702 Fax: 09 426 9669 www.hc.co.nz

PROJECT  
**CABRA DEVELOPMENTS LTD  
 MATUA RESIDENTIAL ESTATE  
 179 MATUA ROAD, HUAPAI  
 STAGE 3A**

DRAWING TITLE  
**ASBUILT  
 BATTER CONSENT NOTICE  
 AREA**

SCALE 1:1500 @ A3	DATE AUGUST 2015
DRAWN DPJ	DRG No. 17550E CN-603
REV	

SUBDIVISION  
 STAGE  
 BOUNDARY