

I certify that these As-built Plans are an accurate record of the works undertaken and that:

- The **Coordinates** (X, Y) are in terms of NZTM on NZGD (2000).
- The **Levels** (Z) are in terms of the Auckland 1946 (MSL) LINZ datum (DOSLI datum).

Signed: 

Chartered Professional Engineer

Date: 16 September 2016

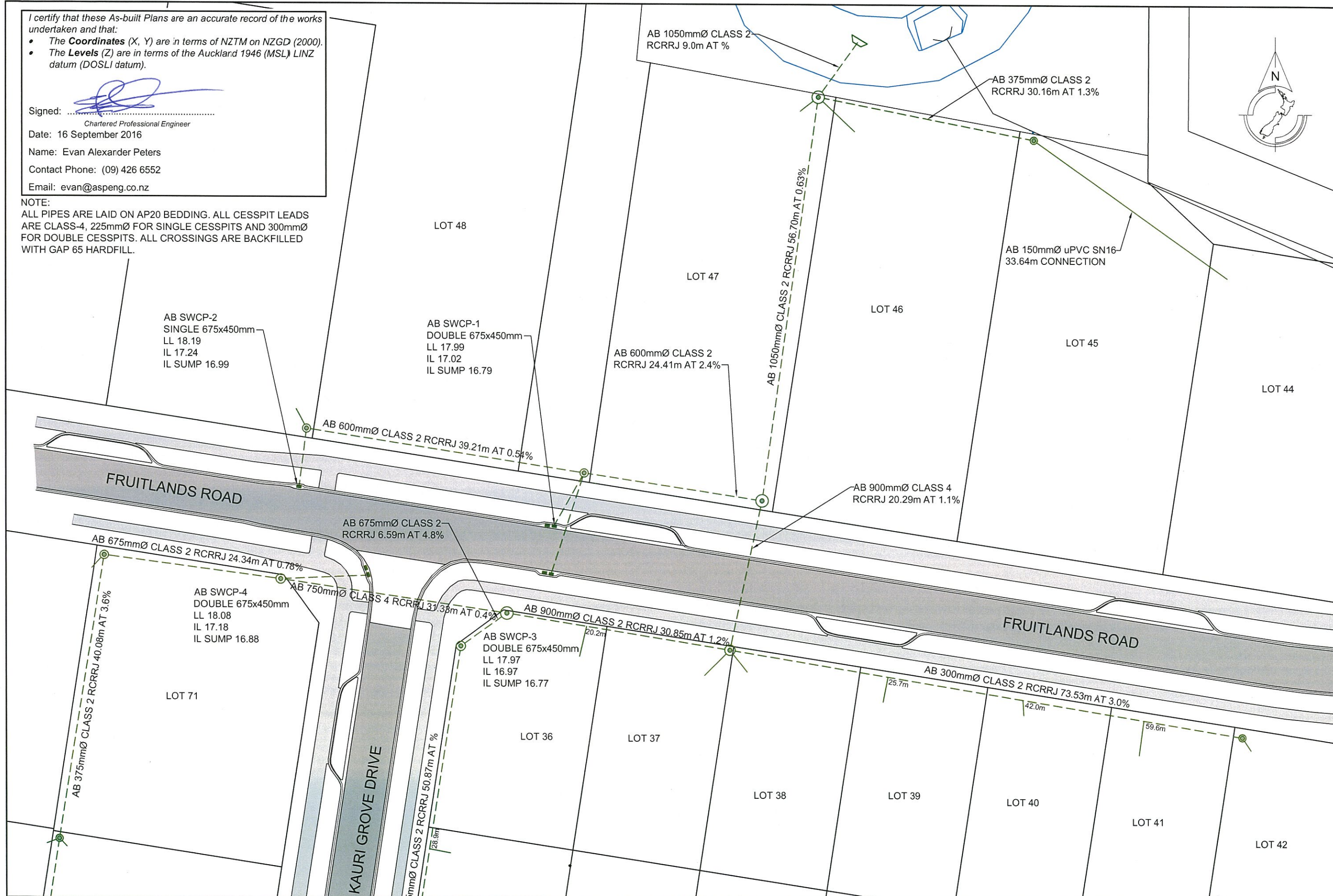
Name: Evan Alexander Peters

Contact Phone: (09) 426 6552

Email: evan@aspeng.co.nz

NOTE:

ALL PIPES ARE LAID ON AP20 BEDDING. ALL CESSPIT LEADS ARE CLASS-4, 225mmØ FOR SINGLE CESSPITS AND 300mmØ FOR DOUBLE CESSPITS. ALL CROSSINGS ARE BACKFILLED WITH GAP 65 HARDFILL.



REV.	DESCRIPTION	CHECK	APP'D	DATE	SCALE	1:500 AT A3
					NAME	DATE
					MJ	09.16
					MJ	09.16
					PF	09.16
					PF	09.16
					EP	09.16

CLIENT
CABRA DEVELOPMENTS LIMITED

Conditions of Use:
These drawings shall only be used for the purpose for which they were supplied. Do not measure off this drawing. If doubt please contact Engineer.

SITE ADDRESS
**56 LOT RESIDENTIAL SUBDIVISION (STAGES 1 TO 3)
202 & 218 MATUA ROAD, HUAPAI
R65429 RDC21584**

DRAWING TITLE
ASBUILT STORMWATER PLAN 1

DRAWING NUMBER
1138 - AB - SW401

DATE
SEPT 2016

REVISION
-



Ph: 09 426 6552
Web: www.aspeng.co.nz

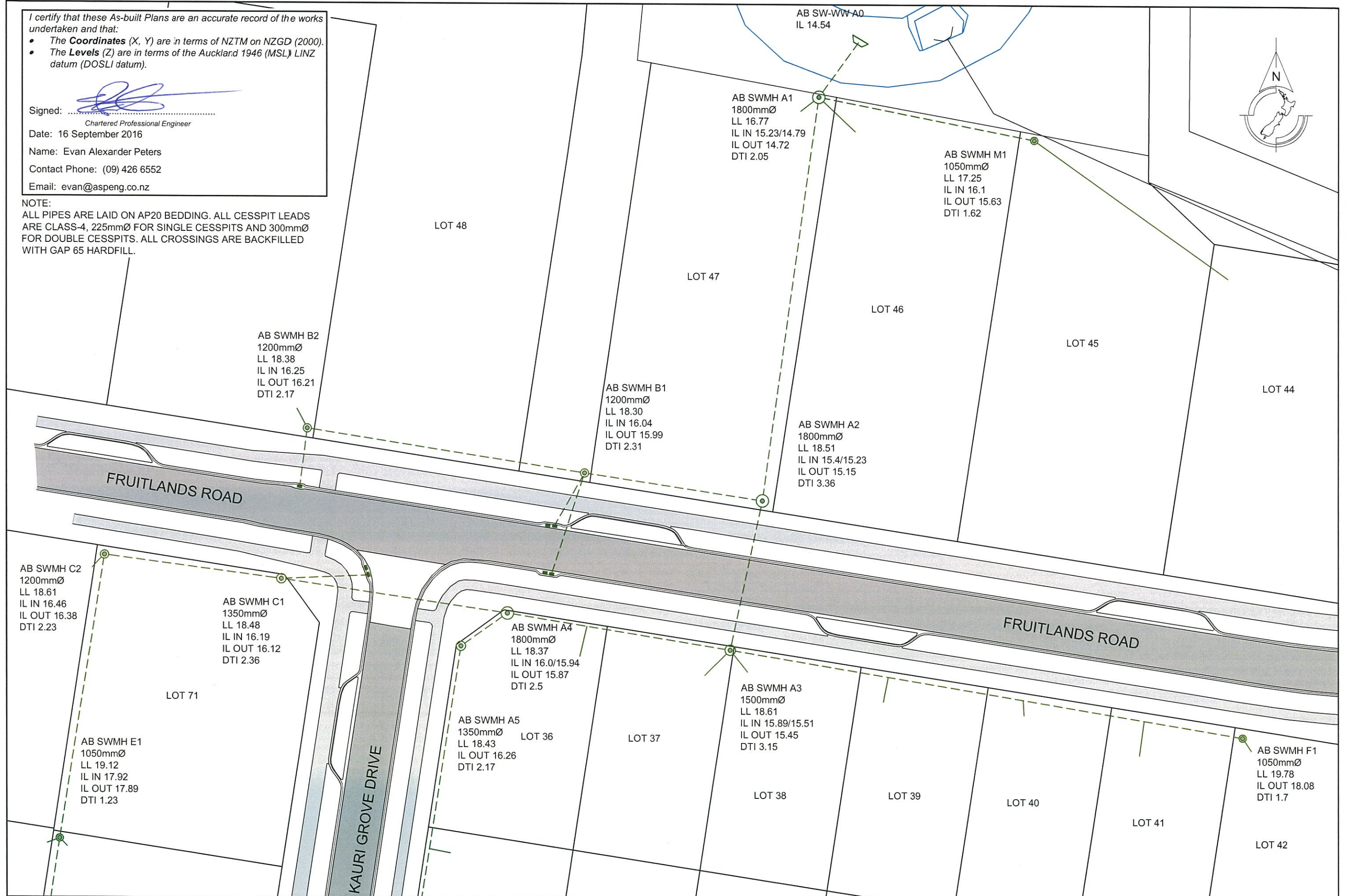
I certify that these As-built Plans are an accurate record of the works undertaken and that:

- The **Coordinates** (X, Y) are in terms of NZTM on NZGD (2000).
- The **Levels** (Z) are in terms of the Auckland 1946 (MSL) LINZ datum (DOSLI datum).

Signed: 
Chartered Professional Engineer

Date: 16 September 2016
Name: Evan Alexander Peters
Contact Phone: (09) 426 6552
Email: evan@aspeng.co.nz

NOTE:
ALL PIPES ARE LAID ON AP20 BEDDING. ALL CESSPIT LEADS ARE CLASS-4, 225mmØ FOR SINGLE CESSPITS AND 300mmØ FOR DOUBLE CESSPITS. ALL CROSSINGS ARE BACKFILLED WITH GAP 65 HARDFILL.



REV.	DESCRIPTION	CHECK	APP'D	DATE	SCALE	1:500 AT A3
	DESIGN			09.16		
	DRAWN			09.16		
	DRAWING CHECK			09.16		
	DESIGN CHECK			09.16		
	APPROVED			09.16		

CLIENT
CABRA DEVELOPMENTS LIMITED

Conditions of Use:
These drawings shall only be used for the purpose for which they were supplied. Do not measure off this drawing. If doubt please contact Engineer.

SITE ADDRESS
**56 LOT RESIDENTIAL SUBDIVISION (STAGES 1 TO 3)
202 & 218 MATUA ROAD, HUAPAI
R65429 RDC21584**

DRAWING TITLE
ASBUILT STORMWATER MANHOLE PLAN 1

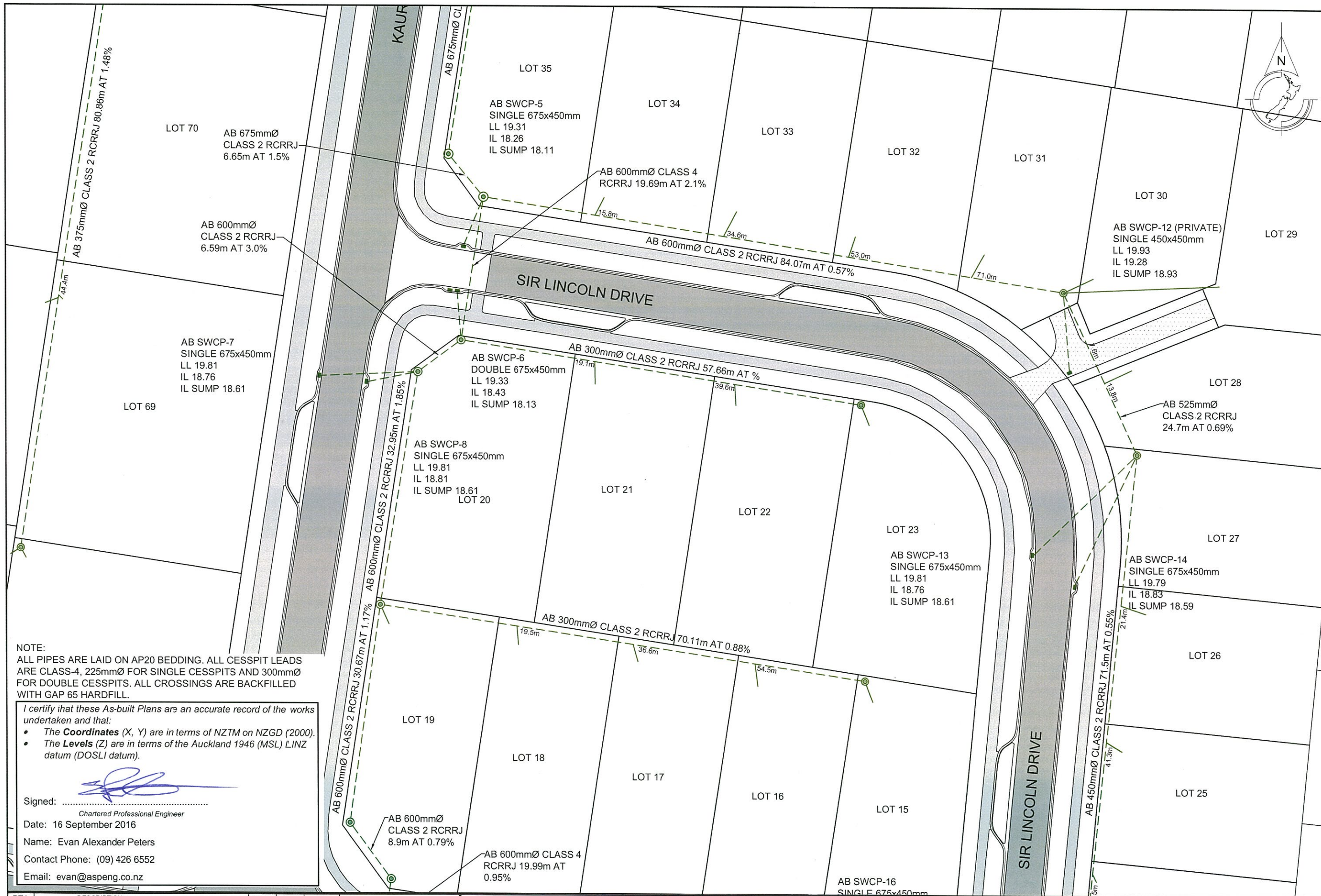
DRAWING NUMBER
1138 - AB - SW402

DATE
SEPT 2016

REVISION
-



Ph: 09 426 6552
Web: www.aspeng.co.nz



NOTE:
 ALL PIPES ARE LAID ON AP20 BEDDING. ALL CESSPIT LEADS ARE CLASS-4, 225mmØ FOR SINGLE CESSPITS AND 300mmØ FOR DOUBLE CESSPITS. ALL CROSSINGS ARE BACKFILLED WITH GAP 65 HARDFILL.

I certify that these As-built Plans are an accurate record of the works undertaken and that:

- The **Coordinates (X, Y)** are in terms of NZTM on NZGD (2000).
- The **Levels (Z)** are in terms of the Auckland 1946 (MSL) LINZ datum (DOSLI datum).

Signed: 
 Chartered Professional Engineer
 Date: 16 September 2016
 Name: Evan Alexander Peters
 Contact Phone: (09) 426 6552
 Email: evan@aspeng.co.nz

REV.	DESCRIPTION	CHECK	APP'D	DATE	SCALE	1:500 AT A3
	DESIGN			09.16		
	DRAWN			09.16		
	DRAWING CHECK			09.16		
	DESIGN CHECK			09.16		
	APPROVED			09.16		

NAME	DATE
MJ	09.16
MJ	09.16
PF	09.16
PF	09.16
EP	09.16

CLIENT: CABRA DEVELOPMENTS LIMITED

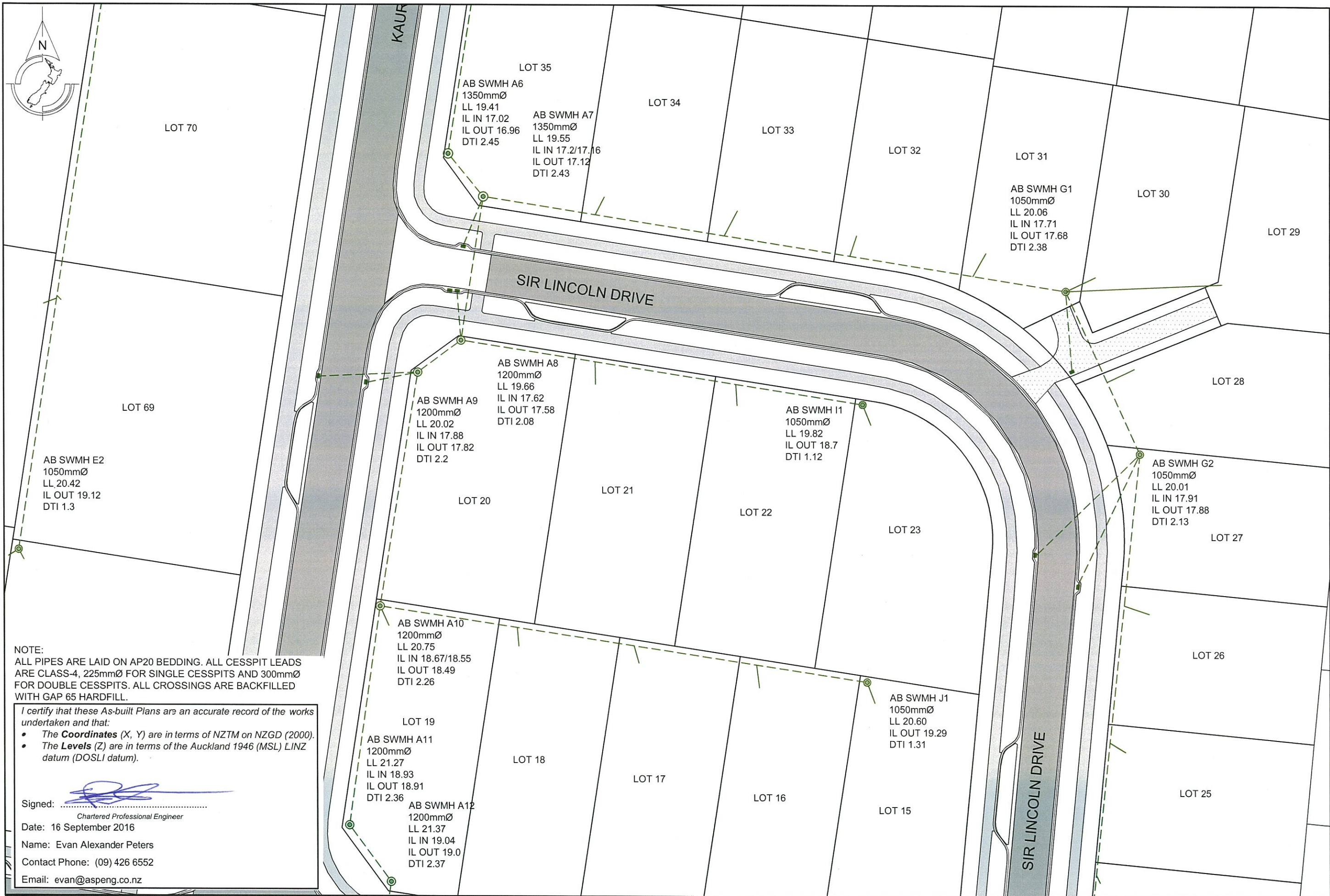
Conditions of Use:
 These drawings shall only be used for the purpose for which they were supplied. Do not measure off this drawing. If doubt please contact Engineer.

SITE ADDRESS 56 LOT RESIDENTIAL SUBDIVISION (STAGES 1 TO 3) 202 & 218 MATUA ROAD, HUAPAI R65429 RDC21584	DRAWING NUMBER 1138 - AB - SW403
DRAWING TITLE ASBUILT STORMWATER PLAN 2	DATE SEPT 2016

REVISION	
DATE	SEPT 2016

ASPIRE
 CONSULTING ENGINEERS

Ph: 09 426 6552
 Web: www.aspeng.co.nz



NOTE:
 ALL PIPES ARE LAID ON AP20 BEDDING. ALL CESSPIT LEADS ARE CLASS-4, 225mmØ FOR SINGLE CESSPITS AND 300mmØ FOR DOUBLE CESSPITS. ALL CROSSINGS ARE BACKFILLED WITH GAP 65 HARDFILL.

I certify that these As-built Plans are an accurate record of the works undertaken and that:

- The **Coordinates (X, Y)** are in terms of NZTM on NZGD (2000).
- The **Levels (Z)** are in terms of the Auckland 1946 (MSL) LINZ datum (DOSLI datum).

Signed: 
 Chartered Professional Engineer
 Date: 16 September 2016
 Name: Evan Alexander Peters
 Contact Phone: (09) 426 6552
 Email: evan@aspeng.co.nz

REV.	DESCRIPTION	CHECK	APP'D	DATE	SCALE
					1:500 AT A3
					NAME DATE
	DESIGN				MJ 09.16
	DRAWN				MJ 09.16
	DRAWING CHECK				PF 09.16
	DESIGN CHECK				PF 09.16
	APPROVED				EP 09.16

CLIENT
CABRA DEVELOPMENTS LIMITED

Conditions of Use:
 These drawings shall only be used for the purpose for which they were supplied. Do not measure off this drawing. If doubt please contact Engineer.

SITE ADDRESS
**56 LOT RESIDENTIAL SUBDIVISION (STAGES 1 TO 3)
 202 & 218 MATUA ROAD, HUAPAI
 R65429 RDC21584**

DRAWING TITLE
ASBUILT STORMWATER MANHOLE PLAN 2

DRAWING NUMBER
1138 - AB - SW404

DATE
SEPT 2016

REVISION
 -



Ph: 09 426 6552
 Web: www.aspeng.co.nz



LEN IRELAND DRIVE

BELLAMONT STREET

KAURI GROVE DRIVE

MATUA ROAD

LOT 67

AB SWCP-10
SINGLE 675x450mm
LL 21.53
IL 20.43
IL SUMP 20.33

AB SWCP-17 (PRIVATE)
SINGLE 450x450mm
LL 22.29
IL 21.59
IL SUMP 21.34

AB 375mmØ CLASS 2 RCRRJ 60.87m AT 0.26%

LOT 65

LOT 66

AB 450mmØ
CLASS 4 RCRRJ
22.5m AT 0.7%

AB 450mmØ CLASS 2 RCRRJ 28.09m AT 1.0%

LOT 8

AB SWCP-9
SINGLE 675x450mm
LL 21.58
IL 20.63
IL SUMP 20.38

AB 450mmØ
CLASS 2 RCRRJ
9.1m AT 7.25%

LOT 9

LOT 10

AB SWCP-16
SINGLE 675x
LL 20.69
IL 19.71
IL SUMP 19.4

LOT 11

AB 300mmØ CLASS 2 RCRRJ 32.78m AT 1.3%

AB 225mmØ CLASS 2 RCRRJ 36.86m AT 1.1%

LOT 6

LOT 5

LOT 4

AB 300mmØ
CLASS 2 RCRRJ
20.04m AT 0.95%

LOT 7

AB 225mmØ CLASS 2 RCRRJ 33.76m AT 1.2%

AB SWCP-11
DOUBLE 675x450mm
LL 22.41
IL 21.56
IL SUMP 21.21

NOTE:
ALL PIPES ARE LAID ON AP20 BEDDING. ALL CESSPIT LEADS ARE CLASS-4, 225mmØ FOR SINGLE CESSPITS AND 300mmØ FOR DOUBLE CESSPITS. ALL CROSSINGS ARE BACKFILLED WITH GAP 65 HARDFILL.

I certify that these As-built Plans are an accurate record of the works undertaken and that:

- The **Coordinates** (X, Y) are in terms of NZTM on NZGD (2000).
- The **Levels** (Z) are in terms of the Auckland 1946 (MSL) LINZ datum (DOSLI datum).

Signed: 
Chartered Professional Engineer
Date: 16 September 2016
Name: Evan Alexander Peters
Contact Phone: (09) 426 6552
Email: evan@aspeng.co.nz

REV.	DESCRIPTION	CHECK	APP'D	DATE	SCALE	1:500 AT A3
	DESIGN		MJ	09.16		
	DRAWN		MJ	09.16		
	DRAWING CHECK		PF	09.16		
	DESIGN CHECK		PF	09.16		
	APPROVED		EP	09.16		

CLIENT
CABRA DEVELOPMENTS LIMITED

Conditions of Use:
These drawings shall only be used for the purpose for which they were supplied. Do not measure off this drawing. If doubt please contact Engineer.

SITE ADDRESS
**56 LOT RESIDENTIAL SUBDIVISION (STAGES 1 TO 3)
202 & 218 MATUA ROAD, HUAPAI
R65429 RDC21584**

DRAWING TITLE
ASBUILT STORMWATER PLAN 3

DRAWING NUMBER
1138 - AB - SW405

DATE
SEPT 2016

REVISION
-



Ph: 09 426 6552
Web: www.aspeng.co.nz



LEN IRELAND DRIVE

BELLAMONT STREET

KAURI GROVE DRIVE

MATUA ROAD

LOT 67

AB SWMH A17
1050mmØ
LL 21.90
IL IN 21.0
IL OUT 20.6
DTI 1.3

AB SWMH A16
1050mmØ
LL 22.20
IL IN 20.44
IL OUT 20.40
DTI 1.8

AB SWMH A14
1050mmØ
LL 21.77
IL IN 19.92
IL OUT 19.89
DTI 1.88

AB SWMH A13
1200mmØ
LL 21.49
IL IN 19.27/19.23
IL OUT 19.19
DTI 2.3

AB SWMH K1
1050mmØ
LL 21.30
IL OUT 19.7
DTI 1.6

AB SWMH A15
1050mmØ
LL 22.20
IL IN 20.32/20.24
IL OUT 20.2
DTI 2.0

AB SWMH L1
1050mmØ
LL 22.20
IL IN 20.58
IL OUT 20.51
DTI 1.69

AB SWMH L2
1050mmØ
LL 22.10
IL OUT 21.0
DTI 1.1

AB SWMH N1
1050mmØ
LL 22.68
IL IN 21.38
IL OUT 20.98
DTI 1.7

NOTE:
ALL PIPES ARE LAID ON AP20 BEDDING. ALL CESSPIT LEADS ARE CLASS-4, 225mmØ FOR SINGLE CESSPITS AND 300mmØ FOR DOUBLE CESSPITS. ALL CROSSINGS ARE BACKFILLED WITH GAP 65 HARDFILL.

I certify that these As-built Plans are an accurate record of the works undertaken and that:

- The **Coordinates** (X, Y) are in terms of NZTM on NZGD (2000).
- The **Levels** (Z) are in terms of the Auckland 1946 (MSL) LINZ datum (DOSLI datum).

Signed: 
Chartered Professional Engineer
Date: 16 September 2016
Name: Evan Alexander Peters
Contact Phone: (09) 426 6552
Email: evan@aspeng.co.nz

REV.	DESCRIPTION	CHECK	APP'D	DATE	SCALE	1:500 AT A3
	DESIGN		MJ	09.16		
	DRAWN		MJ	09.16		
	DRAWING CHECK		PF	09.16		
	DESIGN CHECK		PF	09.16		
	APPROVED		EP	09.16		

CLIENT
CABRA DEVELOPMENTS LIMITED

Conditions of Use:
These drawings shall only be used for the purpose for which they were supplied. Do not measure off this drawing. If doubt please contact Engineer.

SITE ADDRESS
56 LOT RESIDENTIAL SUBDIVISION (STAGES 1 TO 3)
202 & 218 MATUA ROAD, HUAPAI
R65429 RDC21584

DRAWING TITLE
ASBUILT STORMWATER MANHOLE PLAN 3

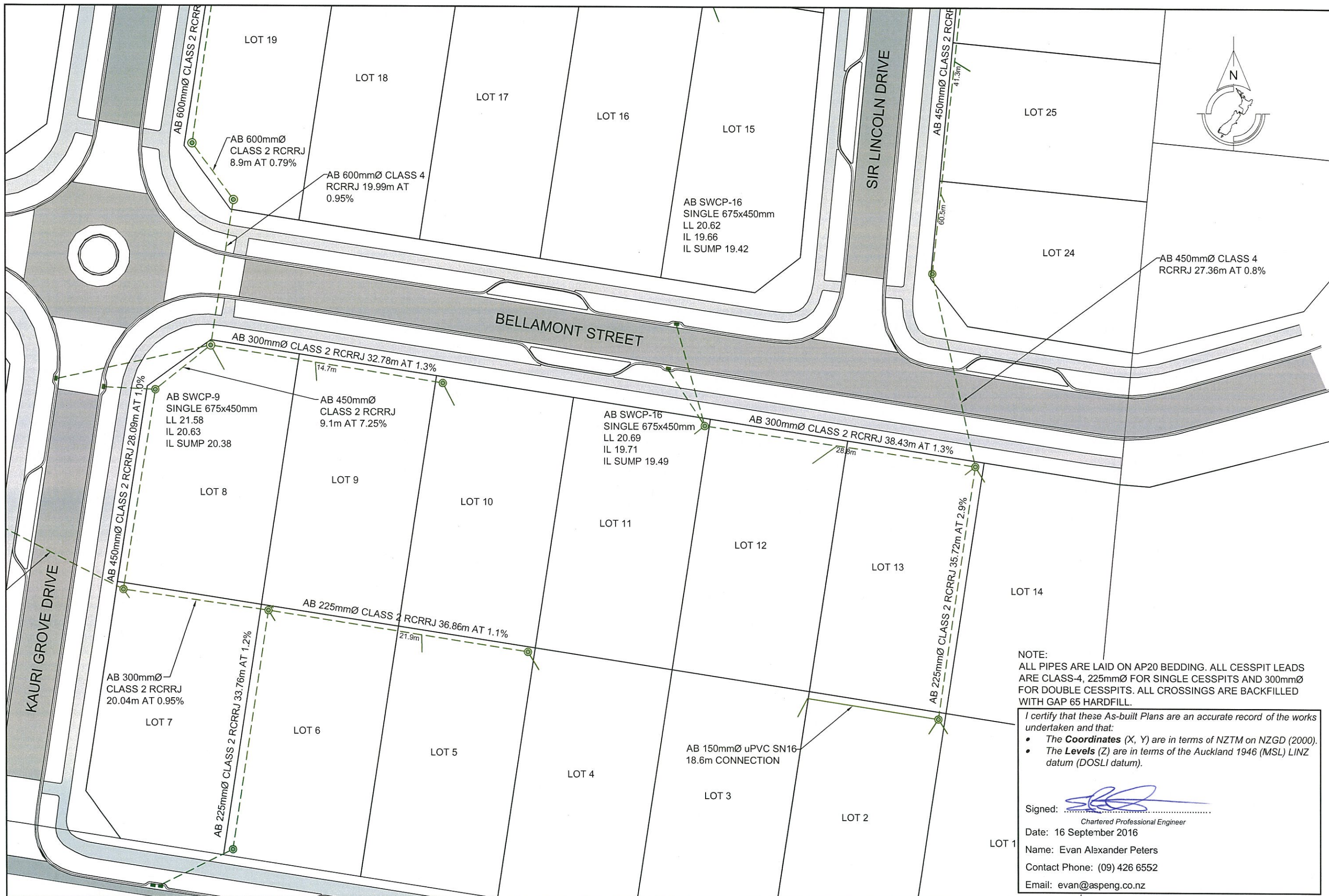
DRAWING NUMBER
1138 - AB - SW406

DATE
SEPT 2016

REVISION
-



Ph: 09 426 6552
Web: www.aspeng.co.nz



NOTE:
 ALL PIPES ARE LAID ON AP20 BEDDING. ALL CESSPIT LEADS ARE CLASS-4, 225mmØ FOR SINGLE CESSPITS AND 300mmØ FOR DOUBLE CESSPITS. ALL CROSSINGS ARE BACKFILLED WITH GAP 65 HARDFILL.

I certify that these As-built Plans are an accurate record of the works undertaken and that:

- The **Coordinates** (X, Y) are in terms of NZTM on NZGD (2000).
- The **Levels** (Z) are in terms of the Auckland 1946 (MSL) LINZ datum (DOSLI datum).

Signed: 
 Chartered Professional Engineer
 Date: 16 September 2016
 Name: Evan Alexander Peters
 Contact Phone: (09) 426 6552
 Email: evan@aspeng.co.nz

REV.	DESCRIPTION	CHECK	APP'D	DATE	SCALE	1:500 AT A3
					NAME	DATE
					MJ	09.16
					MJ	09.16
					PF	09.16
					PF	09.16
					EP	09.16

CLIENT
CABRA DEVELOPMENTS LIMITED

Conditions of Use:
 These drawings shall only be used for the purpose for which they were supplied. Do not measure off this drawing. If doubt please contact Engineer.

SITE ADDRESS
**56 LOT RESIDENTIAL SUBDIVISION (STAGES 1 TO 3)
 202 & 218 MATUA ROAD, HUAPAI
 R65429 RDC21584**

DRAWING TITLE
ASBUILT STORMWATER PLAN 4

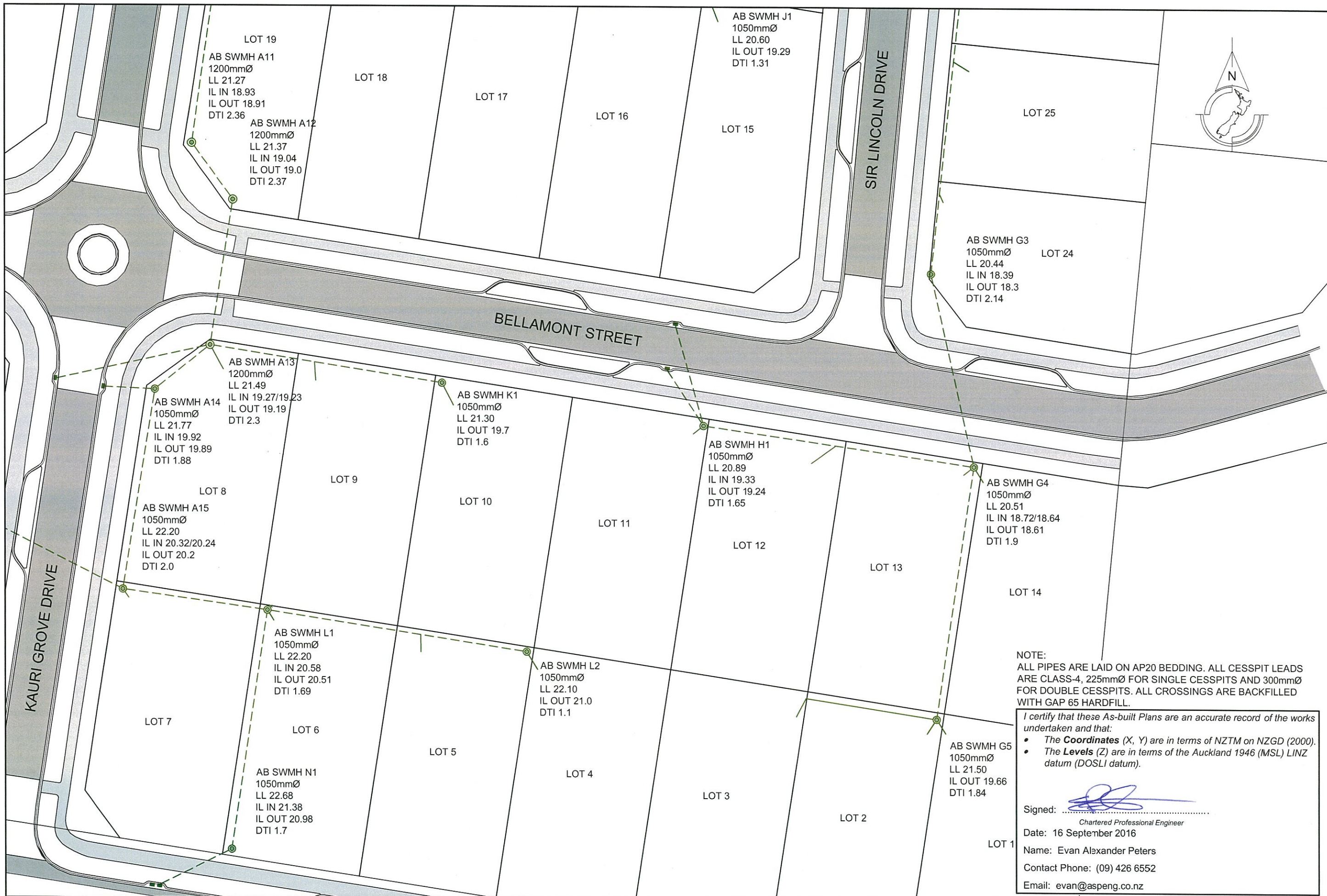
DRAWING NUMBER
1138 - AB - SW407

DATE
SEPT 2016

REVISION
 -



Ph: 09 426 6552
 Web: www.aspeng.co.nz



NOTE:
 ALL PIPES ARE LAID ON AP20 BEDDING. ALL CESSPIT LEADS ARE CLASS-4, 225mmØ FOR SINGLE CESSPITS AND 300mmØ FOR DOUBLE CESSPITS. ALL CROSSINGS ARE BACKFILLED WITH GAP 65 HARDFILL.

I certify that these As-built Plans are an accurate record of the works undertaken and that:

- The **Coordinates (X, Y)** are in terms of NZTM on NZGD (2000).
- The **Levels (Z)** are in terms of the Auckland 1946 (MSL) LINZ datum (DOSLI datum).

Signed: 
 Chartered Professional Engineer

Date: 16 September 2016
 Name: Evan Alexander Peters
 Contact Phone: (09) 426 6552
 Email: evan@aspeng.co.nz

REV.	DESCRIPTION	CHECK	APP'D	DATE	SCALE	1:500 AT A3

CLIENT
 CABRA DEVELOPMENTS LIMITED

Conditions of Use:
 These drawings shall only be used for the purpose for which they were supplied. Do not measure off this drawing. If doubt please contact Engineer.

SITE ADDRESS
 56 LOT RESIDENTIAL SUBDIVISION (STAGES 1 TO 3)
 202 & 218 MATUA ROAD, HUAPAI
 R65429 RDC21584

DRAWING TITLE
 ASBUILT STORMWATER MANHOLE PLAN 4

DRAWING NUMBER
 1138 - AB - SW408

DATE
 SEPT 2016

REVISION
 -



Ph: 09 426 6552
 Web: www.aspeng.co.nz