



Title Plan - LT 467056

Survey Number LT 467056
Surveyor Reference 60354-Hatfields-Stage2B
Surveyor William Yat-Wah Cheung
Survey Firm Wood & Partners Consultants Ltd
Surveyor Declaration

Survey Details

Dataset Description LOTS 1 TO 25, 39 TO 42, 61, 62, 402, 501, 502 & 602 BEING A SUBDIVISION OF LOT 301 DP 456159

Status Initiated

Land District North Auckland **Survey Class** Class A

Submitted Date **Survey Approval Date**
Deposit Date

Territorial Authorities

Auckland

Comprised In

CT 607475

Created Parcels

Parcels	Parcel Intent	Area	CT Reference
Lot 1 Deposited Plan 467056	Fee Simple Title	0.1035 Ha	624994
Lot 2 Deposited Plan 467056	Fee Simple Title	0.0932 Ha	624995
Lot 3 Deposited Plan 467056	Fee Simple Title	0.0773 Ha	624996
Lot 4 Deposited Plan 467056	Fee Simple Title	0.0716 Ha	624997
Lot 5 Deposited Plan 467056	Fee Simple Title	0.0711 Ha	624998
Lot 6 Deposited Plan 467056	Fee Simple Title	0.0711 Ha	624999
Lot 7 Deposited Plan 467056	Fee Simple Title	0.0781 Ha	625000
Lot 8 Deposited Plan 467056	Fee Simple Title	0.0982 Ha	625001
Lot 9 Deposited Plan 467056	Fee Simple Title	0.0988 Ha	625002
Lot 10 Deposited Plan 467056	Fee Simple Title	0.0600 Ha	625003
Lot 11 Deposited Plan 467056	Fee Simple Title	0.0600 Ha	625004
Lot 12 Deposited Plan 467056	Fee Simple Title	0.0600 Ha	625005
Lot 13 Deposited Plan 467056	Fee Simple Title	0.0600 Ha	625006
Lot 14 Deposited Plan 467056	Fee Simple Title	0.0670 Ha	625007
Lot 15 Deposited Plan 467056	Fee Simple Title	0.0659 Ha	625008
Lot 16 Deposited Plan 467056	Fee Simple Title	0.0600 Ha	625009
Lot 17 Deposited Plan 467056	Fee Simple Title	0.0621 Ha	625010
Lot 18 Deposited Plan 467056	Fee Simple Title	0.0600 Ha	625011
Lot 19 Deposited Plan 467056	Fee Simple Title	0.0600 Ha	625012



Title Plan - LT 467056

Created Parcels

Parcels	Parcel Intent	Area	CT Reference
Lot 20 Deposited Plan 467056	Fee Simple Title	0.0600 Ha	625013
Lot 21 Deposited Plan 467056	Fee Simple Title	0.0600 Ha	625014
Lot 22 Deposited Plan 467056	Fee Simple Title	0.0944 Ha	625015
Lot 23 Deposited Plan 467056	Fee Simple Title	0.0782 Ha	625016
Lot 24 Deposited Plan 467056	Fee Simple Title	0.0799 Ha	625017
Lot 25 Deposited Plan 467056	Fee Simple Title	0.0760 Ha	625018
Lot 39 Deposited Plan 467056	Fee Simple Title	0.0749 Ha	625019
Lot 40 Deposited Plan 467056	Fee Simple Title	0.0736 Ha	625020
Lot 41 Deposited Plan 467056	Fee Simple Title	0.0782 Ha	625021
Lot 42 Deposited Plan 467056	Fee Simple Title	0.0826 Ha	625022
Lot 61 Deposited Plan 467056	Fee Simple Title	0.0621 Ha	625023
Lot 62 Deposited Plan 467056	Fee Simple Title	0.0621 Ha	625024
Lot 402 Deposited Plan 467056	Vesting on Deposit for Road	0.5734 Ha	
Lot 501 Deposited Plan 467056	Fee Simple Title	0.0836 Ha	Multiple
Lot 502 Deposited Plan 467056	Fee Simple Title	0.0893 Ha	Multiple
Lot 602 Deposited Plan 467056	Vesting on Deposit for Recreation Reserve (Territorial Authority)	1.2004 Ha	625025
Area C Deposited Plan 467056	Easement		
Area D Deposited Plan 467056	Easement		
Total Area		<hr/> 4.2066 Ha	



SUBDIVISION OF LOT 301 DP 456159	
LAND REGISTRATION DISTRICT	NORTH AUCKLAND
PLAN NUMBER	DP 467056
TERRITORIAL AUTHORITY	AUCKLAND COUNCIL
TERRITORIAL AUTHORITY REF	R57858, 39629, 39628
DATE	JULY 2013
OUR REF	60354-Hatfields-Stage2B

MEMORANDUM OF EASEMENTS IN GROSS			
PURPOSE	SHOWN AS	SERVIENT TENEMENT	GRANTEE
RIGHT TO DRAIN WATER	C	LOT 502	AUCKLAND COUNCIL
	D	LOT 602	



SUBDIVISION OF LOT 301 DP 456159	
LAND REGISTRATION DISTRICT	NORTH AUCKLAND
PLAN NUMBER	DP 467056
TERRITORIAL AUTHORITY	AUCKLAND COUNCIL
TERRITORIAL AUTHORITY REF	R57858, 39629, 39628
DATE	JULY 2013
OUR REF	60354-Hatfields-Stage2B

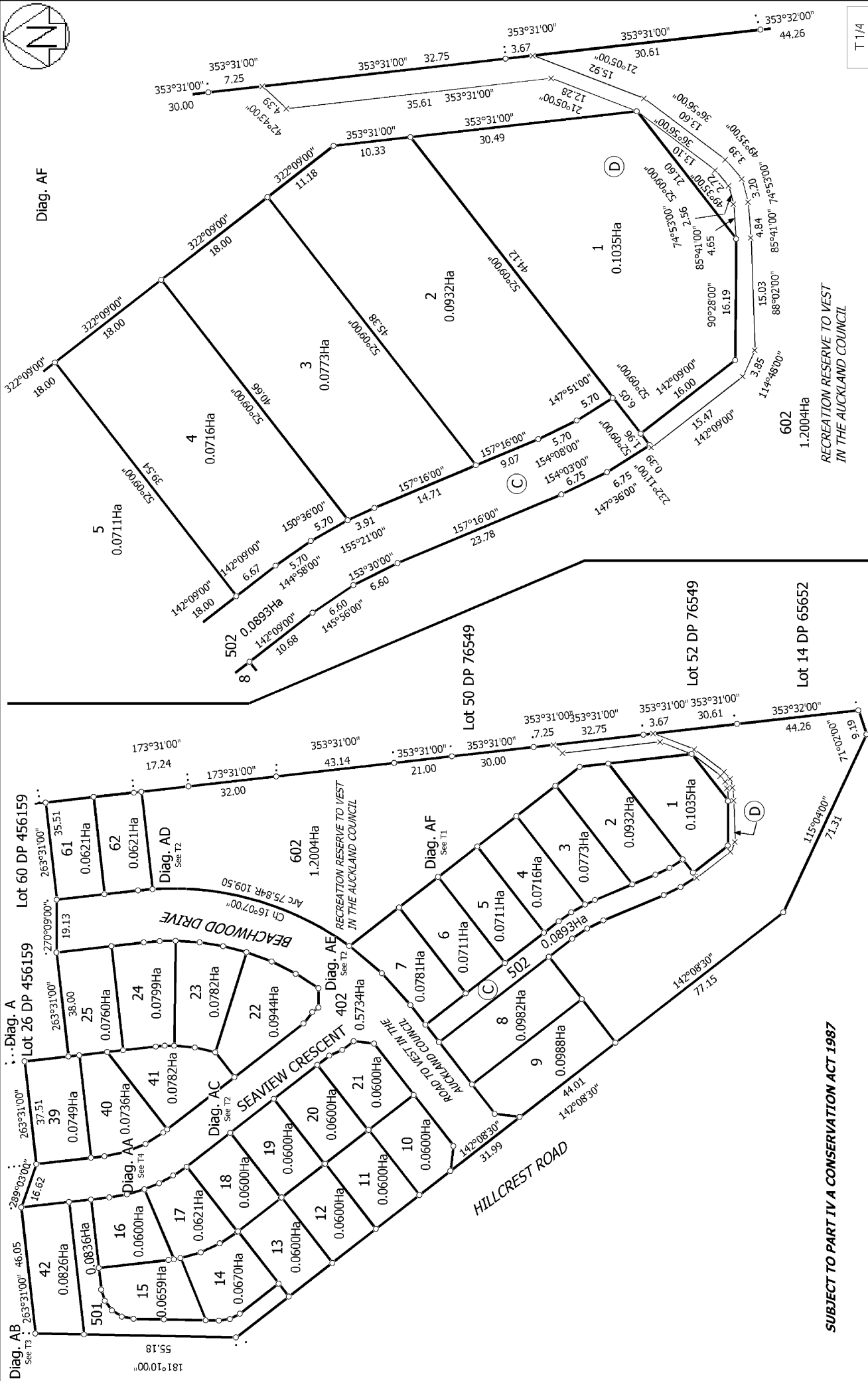
AMALGAMATION CONDITIONS

THAT LOT 501 HEREON (LEGAL ACCESS) BE HELD AS TO THREE UNDIVIDED ONE THIRD SHARES BY THE OWNERS OF LOTS 13, 14 & 15 HEREON AS TENANTS IN COMMON IN THE SAID SHARES AND THAT INDIVIDUAL CERTIFICATES OF TITLE BE ISSUED IN ACCORDANCE THEREWITH.

SEE RGL REF: A634861

THAT LOT 502 HEREON (LEGAL ACCESS) BE HELD AS TO SEVEN UNDIVIDED ONE SEVENTH SHARES BY THE OWNERS OF LOTS 1, 2, 3, 4, 5, 6, & 7 HEREON AS TENANTS IN COMMON IN THE SAID SHARES AND THAT INDIVIDUAL CERTIFICATES OF TITLE BE ISSUED IN ACCORDANCE THEREWITH.

SEE RGL REF: A634861



T 1/4

<p>Land District: North Auckland Digitally Generated Plan Generated on: 25/07/2013 11:25am Page 5 of 8</p>	<p>LOTS 1 TO 25, 39 TO 42, 61, 62, 402, 501, 502 & 602 BEING A SUBDIVISION OF LOT 301 DP 456159</p>	<p>Surveyor: William Yat-Wah Cheung Firm: Wood & Partners Consultants Ltd</p>	<p>Title Plan LT 467056 DRAFT</p>
--	--	---	--

SUBJECT TO PART IV A CONSERVATION ACT 1987

RECREATION RESERVE TO VEST
IN THE AUCKLAND COUNCIL

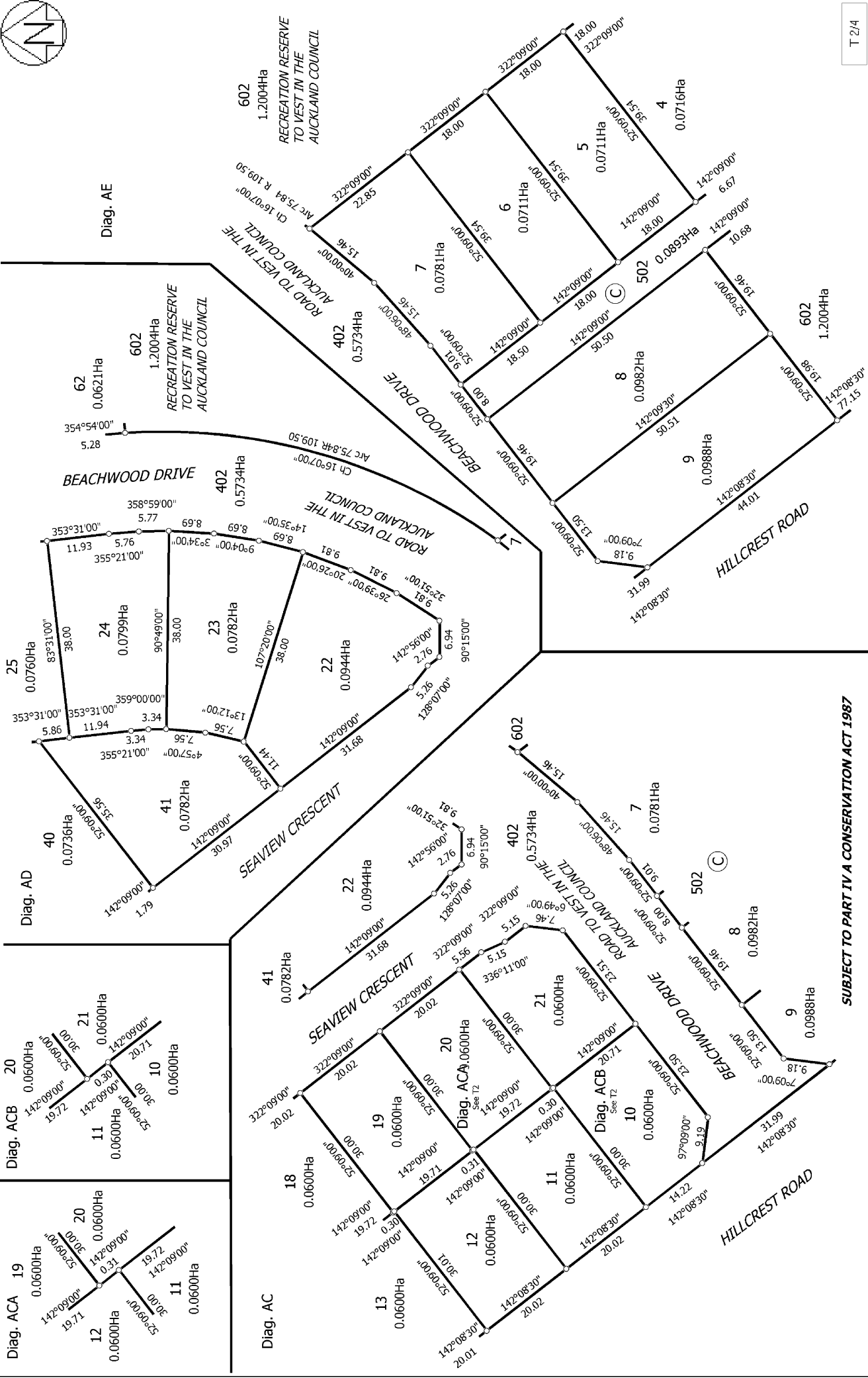
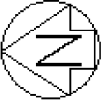
602
1.2004Ha

602
1.2004Ha

602
1.2004Ha

602
1.2004Ha

602
1.2004Ha



T 2/4

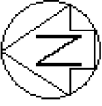
Title Plan
LT 467056
 DRAFT

Surveyor: William Yat-Wah Cheung
 Firm: Wood & Partners Consultants Ltd

LOTS 1 TO 25, 39 TO 42, 61, 62, 402, 501, 502 & 602 BEING A SUBDIVISION OF LOT 301 DP 456159

Land District: North Auckland
 Digitally Generated Plan
 Generated on: 25/07/2013 11:25am Page 6 of 8

SUBJECT TO PART IV A CONSERVATION ACT 1987

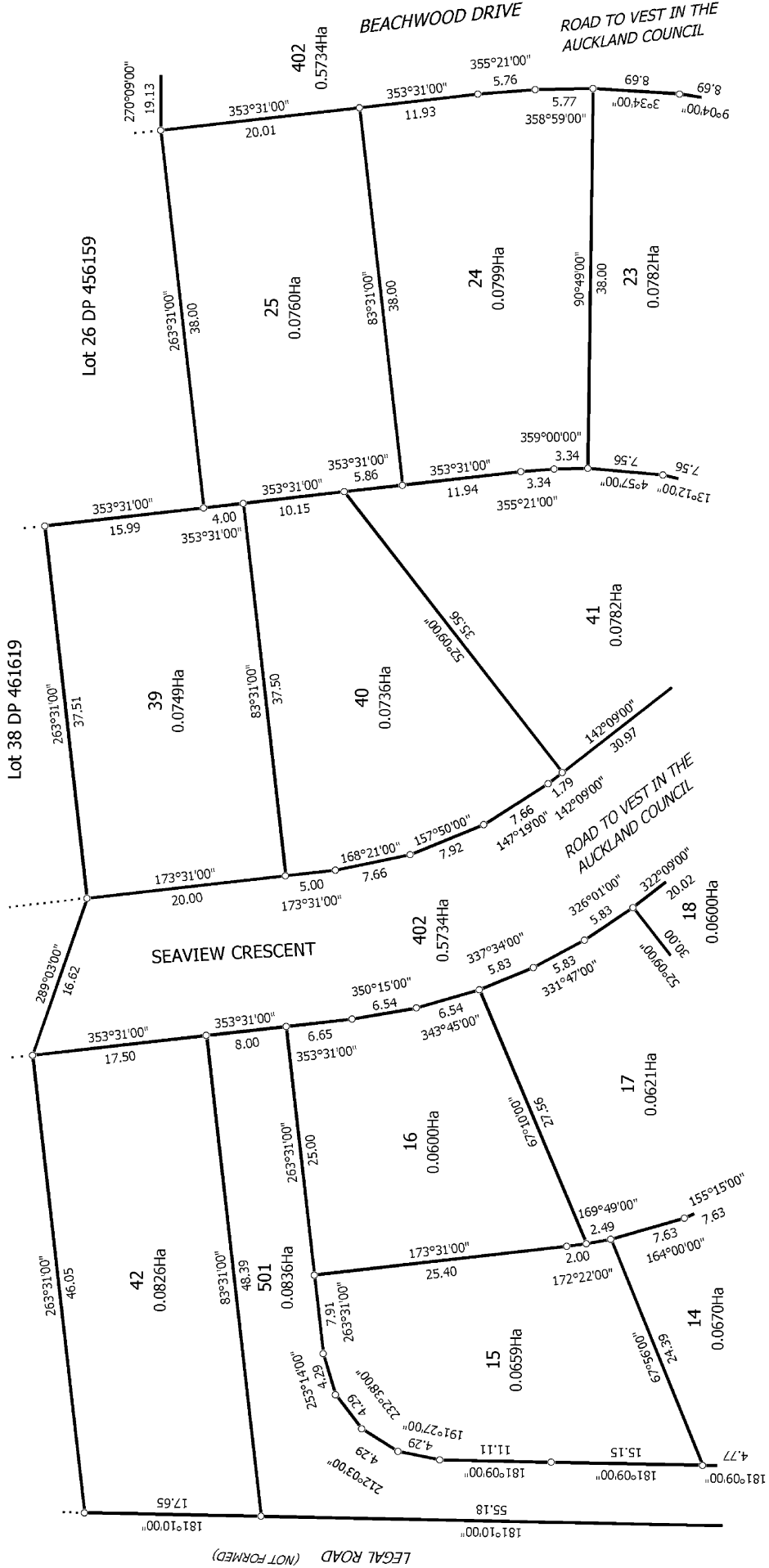


Diag. AB

Lot 43 DP 461619

Lot 38 DP 461619

Lot 26 DP 456159



SUBJECT TO PART IV A CONSERVATION ACT 1987

T 3/4

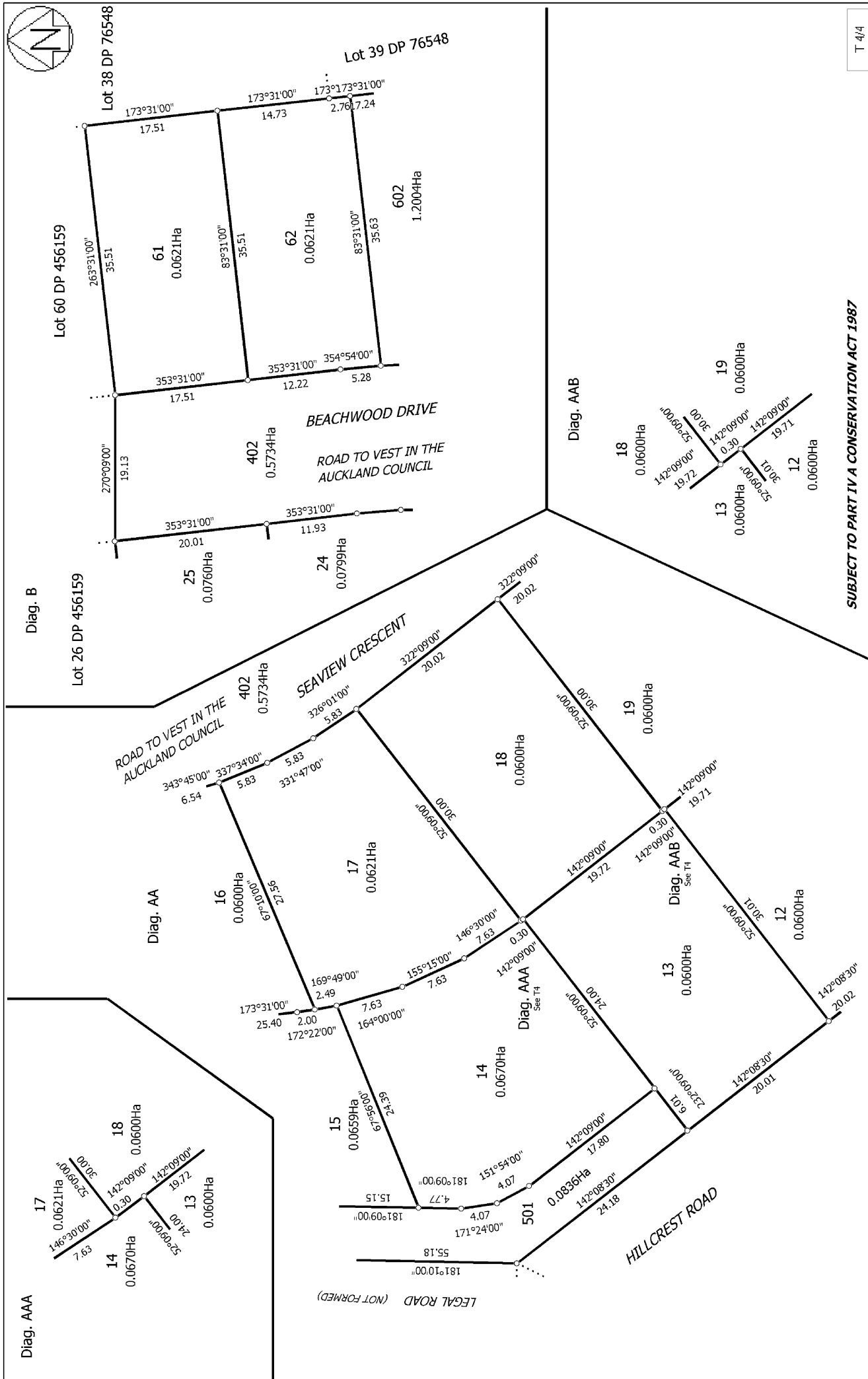
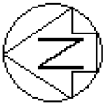
Land District: North Auckland

Digitally Generated Plan.
Generated on: 25/07/2013 11:25am Page 7 of 8

LOTS 1 TO 25, 39 TO 42, 61, 62, 402, 501, 502 & 602 BEING A SUBDIVISION
OF LOT 301 DP 456159

Surveyor: William Yat-Wah Cheung
Firm: Wood & Partners Consultants Ltd

Title Plan
LT 467056
DRAFT



T 4/4

SUBJECT TO PART IV A CONSERVATION ACT 1987

Title Plan
LT 467056
DRAFT

Surveyor: William Yat-Wah Cheung
Firm: Wood & Partners Consultants Ltd

LOTS 1 TO 25, 39 TO 42, 61, 62, 402, 501, 502 & 602 BEING A SUBDIVISION
OF LOT 301 DP 456159

Land District: North Auckland
Digitally Generated Plan
Generated on: 25/07/2013 11:25am Page 8 of 8